



**LifeArk™**

*MASTER HOUSING TYPES*



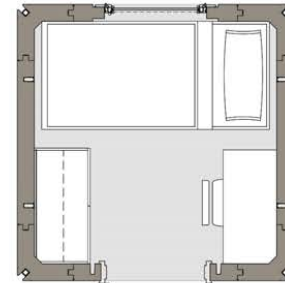
# LifeArk Housing Types- HCD Factory Built Housing

## Shelter Single (67 SF)

- 1 x 1 Single Shelter
- Power / lighting
- Wall AC / heater

### Options

- Automatic Fire Sprinkler (NFPA 13D)
- Drywall+Painted Interior
- Cladding
- Deck / Stair/Ramp
- Solar Panels
- Furnishing / Appliances



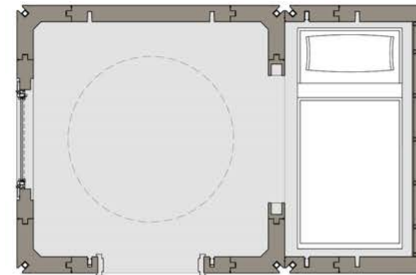
# LifeArk Housing Types- HCD Factory Built Housing

## Shelter ADA (100 SF)

- 1.5 x 1 Module Shelter
- Power / lighting
- Drywall+Painted Interior
- Wall AC / heater

### Options

- Automatic Fire Sprinkler (NFPA 13D)
- Cladding
- Deck / Stair/Ramp
- Solar Panels
- Furnishing / Appliances



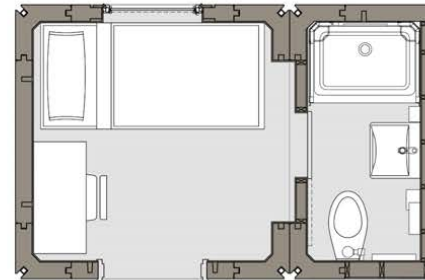
# LifeArk Housing Types- HCD Factory Built Housing

## Shelter Ensuite 1 (100 SF)

- 1.5 x 1 Module Interim Ensuite Unit
- Bedroom + Bathroom
- Power / lighting
- Drywall Finished Interior
- Wall AC / Heater

### Options

- Automatic Fire Sprinkler (NFPA 13D)
- Cladding
- Deck / Stair/Ramp
- Solar Panels
- Furnishing / Appliances



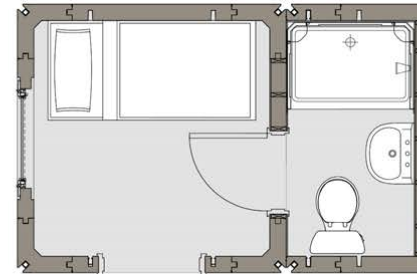
# LifeArk Housing Types- HCD Factory Built Housing

## Shelter Ensuite 2 (100 SF)

- 1.5 x 1 Module Interim Ensuite Unit
- Bedroom + Bathroom
- Power / lighting
- Drywall Finished Interior
- Wall AC / Heater

### Options

- Automatic Fire Sprinkler (NFPA 13D)
- Cladding
- Deck / Stair/Ramp
- Solar Panels
- Furnishing / Appliances





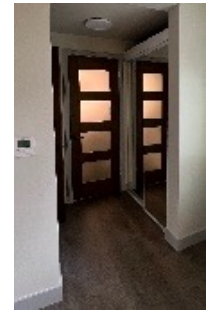
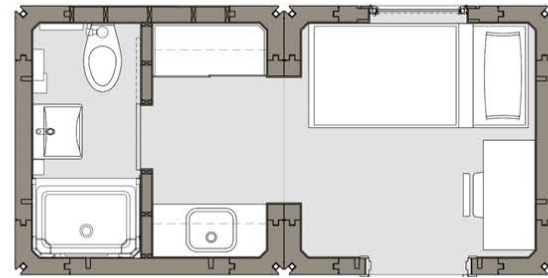
# LifeArk Housing Types- HCD Factory Built Housing

## Interim Ensuite Studio 1 (133 SF)

- 2 x 1 Module Interim Ensuite Unit
- Bedroom + Bathroom
- Kitchenette + Closet
- Drywall Finished Interior
- Full MEP System
- Automatic Fire Sprinkler (NFPA 13D)

### Options

- Cladding
- Deck / Stair/Ramp
- Solar Panels
- Furnishings / Appliances



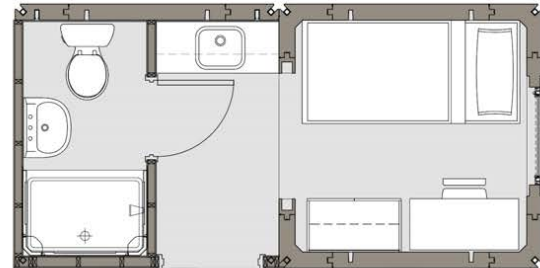
# LifeArk Housing Types- HCD Factory Built Housing

## Interim Ensuite Studio 2 (133 SF)

- 2 x 1 Module Interim Ensuite Unit
- Bedroom + Bathroom
- Kitchenette + Entry
- Drywall Finished Interior
- Full MEP System
- Automatic Fire Sprinkler (NFPA 13D)

### Options

- Cladding
- Deck / Stair/Ramp
- Solar Panels
- Furnishings / Appliances



# LifeArk Housing Types- HCD Factory Built Housing

## Efficiency Studio (200 SF/Unit)

- 1.5 x 2- Studio Unit
- Bedroom + Bathroom
- Kitchenette
- Drywall Finished Interior
- Full MEP System
- Automatic Fire Sprinkler (NFPA 13D)

### Options

- Cladding
- Deck / Stair/Ramp
- Solar Panels
- Furnishings / Appliances





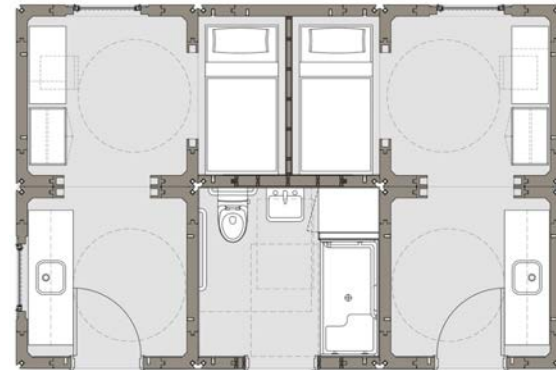
# LifeArk Housing Types- HCD Factory Built Housing

## Efficiency Studio ADA (200 SF/Unit)

- 1.5 x 2- ADA Studio Unit
- Bedroom + Bathroom
- Kitchenette
- Drywall Finished Interior
- Full MEP System
- Automatic Fire Sprinkler (NFPA 13D)

### Options

- Cladding
- Deck / Stair/Ramp
- Solar Panels
- Furnishings / Appliances



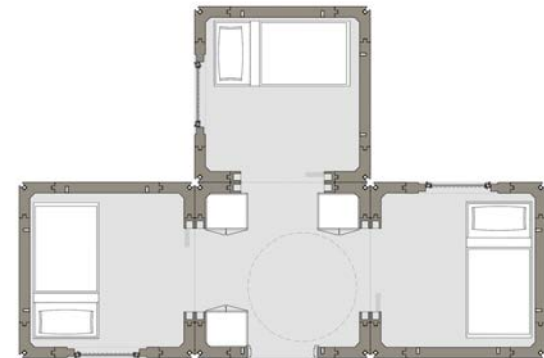
# LifeArk Housing Types- HCD Factory Built Housing

## 4MT 3 Bed ADA Cluster (266 SF/Unit)

- 4 Module ADA 3-Bed Cluster
- 3 Bedrooms + Common
- Power / lighting
- Drywall Finished Interior
- Wall AC/ Heater
- Automatic Fire Sprinkler (NFPA 13D)

### Options

- Porch / Deck
- Cladding
- Deck/ Stair/Ramp
- Solar Panels
- Furnishings/ Appliances



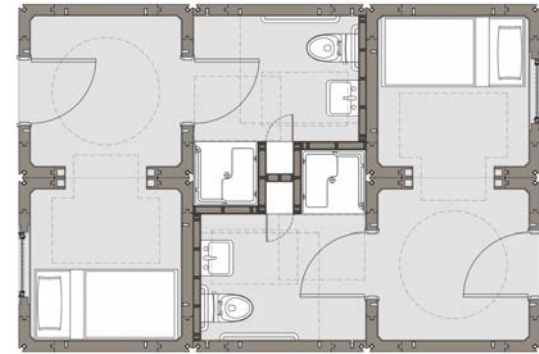
# LifeArk Housing Types- HCD Factory Built Housing

## 1 Bed Ensuite ADA Studio(200 SF/Unit)

- 2 x 2 Studio Unit
- Bedroom + Bathroom
- Kitchenette
- Drywall Finished Interior
- Full MEP System
- Automatic Fire Sprinkler (NFPA 13D)

### Options

- Cladding
- Deck / Stair/Ramp
- Solar Panels
- Furnishings / Appliances



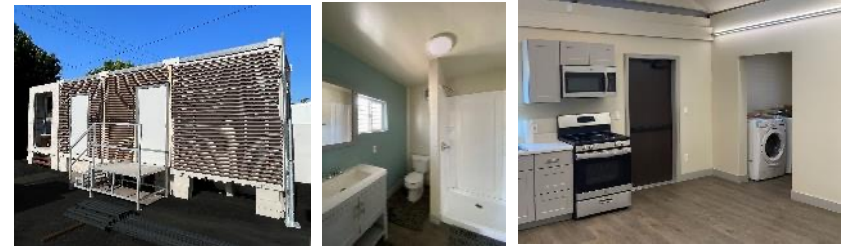
# LifeArk Housing Types- HCD Factory Built Housing

## 1Bed Studio (266 SF/Unit)

- 3 x 2 Ensuite ADA Unit
- Bedroom
- ADA Bathroom
- Kitchenette
- Drywall Finished Interior
- Full MEP System
- Automatic Fire Sprinkler (NFPA 13D)

### Options

- Porch / Deck
- Cladding
- Deck/ Stair/Ramp
- Solar Panels
- Furnishings/ Appliances



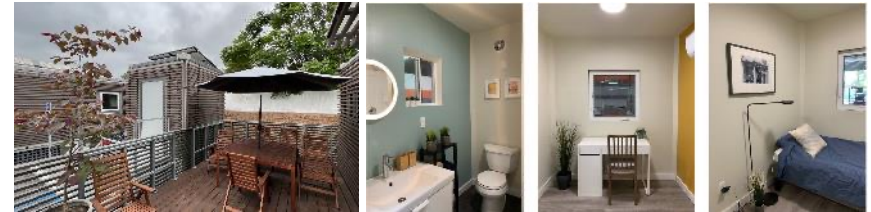
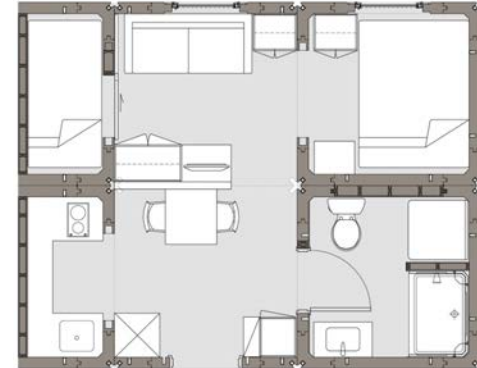
# LifeArk Housing Types- HCD Factory Built Housing

## 2-Bed Studio (333 SF/Unit)

- 2.5 x 2- 2-Bedroom Unit
- 2 Bedrooms + Bathroom
- Kitchenette
- Drywall Finished Interior
- Full MEP System
- Automatic Fire Sprinkler (NFPA 13D)

### Options

- Cladding
- Deck / Stair/Ramp
- Solar Panels
- Furnishings / Appliances





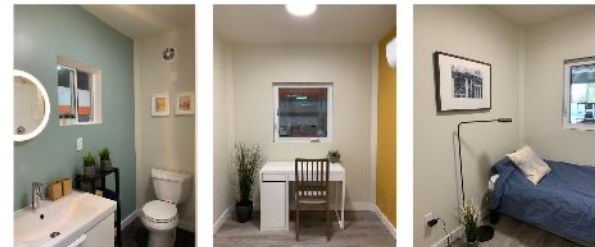
# LifeArk Housing Types- HCD Factory Built Housing

## Family Studio (333 SF/Unit)

- 2.5 x 2- 1-Bedroom Unit
- Bedroom + Kid Zone + 2 Bathrooms
- Kitchenette
- Drywall Finished Interior
- Full MEP System
- Automatic Fire Sprinkler (NFPA 13D)

### Options

- Cladding
- Deck / Stair/Ramp
- Solar Panels
- Furnishings / Appliances



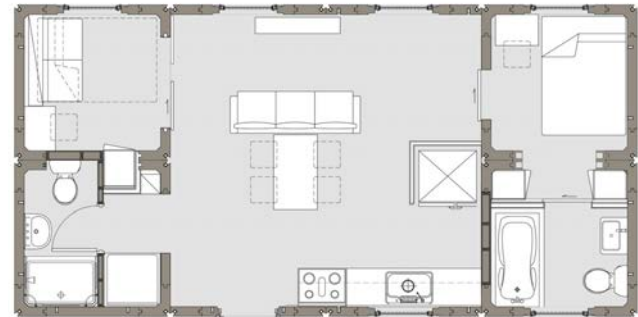
# LifeArk Housing Types- HCD Factory Built Housing

## 4x2 Family Housing (533 SF)

- 4x3- 2-Bedroom Unit
- 2 Bedrooms + 2 Bathrooms
- Kitchen + Laundry
- Drywall Finished Interior
- Full MEP System
- Automatic Fire Sprinkler (NFPA 13D)

### Options

- Cladding
- Deck / Stair/Ramp
- Solar Panels
- Furnishings / Appliances



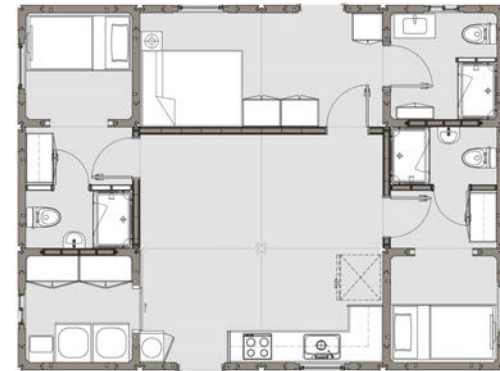
# LifeArk Housing Types- HCD Factory Built Housing

## 4x3 Shared Housing (800 SF)

- 4x3- 3-Bedroom Unit
- 3 Bedrooms + 3 Bathrooms
- Kitchen + Laundry/Utility
- Drywall Finished Interior
- Full MEP System
- Automatic Fire Sprinkler (NFPA 13D)

### Options

- Cladding
- Deck / Stair/Ramp
- Solar Panels
- Furnishings / Appliances



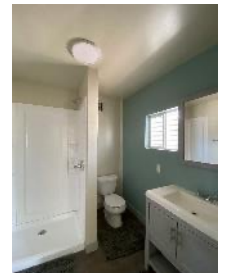
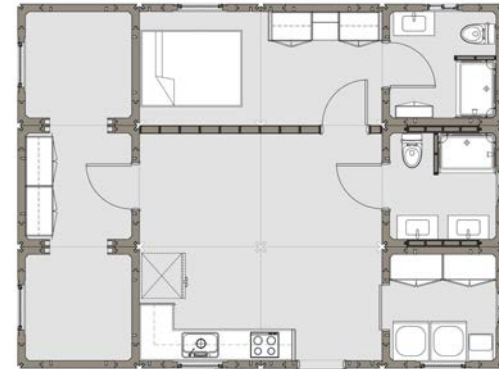
# LifeArk Housing Types- HCD Factory Built Housing

## 4x3 ADU (800 SF)

- 4x3- 3-Bedroom ADU Unit
- 3 Bedrooms + 2 Bathrooms
- Kitchen + Laundry/Utility
- Drywall Finished Interior
- Full MEP System
- Automatic Fire Sprinkler (NFPA 13D)

### Options

- Cladding
- Deck / Stair/Ramp
- Solar Panels
- Furnishings / Appliances



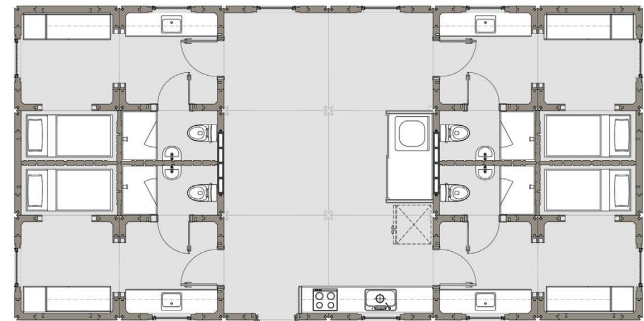
# LifeArk Housing Types- HCD Factory Built Housing

## 6x3 Shared Housing (1,200 SF)

- 6x3- 4-Bedroom Unit
- 4 Bedrooms + 4 Bathrooms
- Living + Dining + Kitchen + Laundry/Utility
- Drywall Finished Interior
- Full MEP System
- Automatic Fire Sprinkler (NFPA 13D)

### Options

- Cladding
- Deck / Stair/Ramp
- Solar Panels
- Furnishings / Appliances





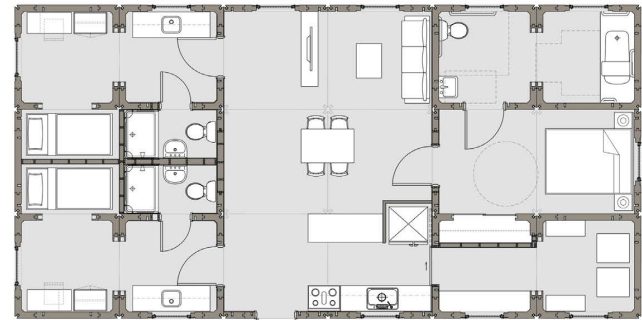
# LifeArk Housing Types- HCD Factory Built Housing

## 6x3 Family Housing (1,200 SF)

- 6x3- 3-Bedroom Unit
- 3 Bedrooms + 3 Bathrooms
- Living + Dining + Kitchen + Laundry/Utility
- Drywall Finished Interior
- Full MEP System
- Automatic Fire Sprinkler (NFPA 13D)

### Options

- Cladding
- Deck / Stair/Ramp
- Solar Panels
- Furnishings / Appliances



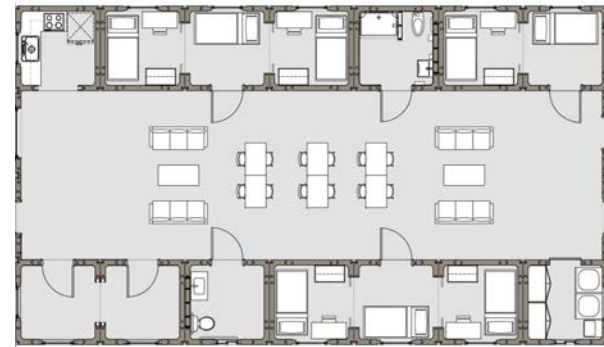
# LifeArk Housing Types- HCD Factory Built Housing

## 4x7 Shared Housing (1,867 SF)

- 4x7- 8-Bed Unit
- Bedrooms + Bathrooms
- Living + Dining + Kitchen + Laundry/Utility + Office
- Drywall Finished Interior
- Full MEP System
- Automatic Fire Sprinkler (NFPA 13D)

### Options

- Cladding
- Deck / Stair/Ramp
- Solar Panels
- Furnishings / Appliances



# LifeArk Housing Types- HCD Factory Built Housing

## 6x6 Shared Housing (2,400 SF)

- 4x7- 8-Bed Unit
- 8 Bedrooms + 8 Bathrooms
- Living + Dining + Kitchen + Laundry/Utility
- Drywall Finished Interior
- Full MEP System
- Automatic Fire Sprinkler (NFPA 13D)

### Options

- Cladding
- Deck / Stair/Ramp
- Solar Panels
- Furnishings / Appliances



# LifeArk Housing Types- HCD Factory Built Housing

## 6x9 Shared Housing (3,600 SF)

- 6x9- 12-Bedroom Unit
- 12 Bedrooms + 11 Bathrooms + 1 ADA Bathroom
- Living + Dining + Kitchen + Laundry/Utility
- Drywall Finished Interior
- Full MEP System
- Automatic Fire Sprinkler (NFPA 13D)

### Options

- Cladding
- Deck / Stair/Ramp
- Solar Panels
- Furnishings / Appliances



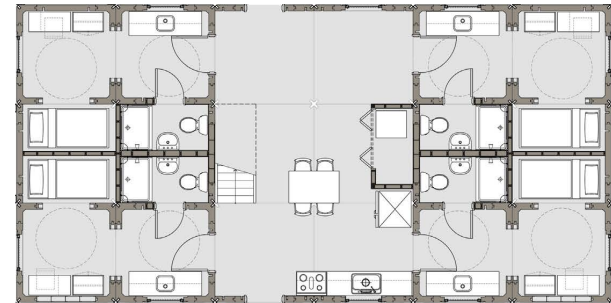
# LifeArk Housing Types- HCD Factory Built Housing

## 6x3 2 Story Shared Housing (2,400 SF)

- 6x3- 2 Story Unit
- 8 Bedrooms + 8 Bathrooms
- Living + Dining + Kitchen + Laundry/Utility
- Drywall Finished Interior
- Full MEP System
- Automatic Fire Sprinkler (NFPA 13D)

### Options

- Cladding
- Deck / Stair/Ramp
- Solar Panels
- Furnishings / Appliances





# LifeArk Housing Types- HCD Factory Built Housing

## 6x9 2 Story Shared Housing (7,200 SF)

- 6x9- 2 Story Unit
- 24 Bedrooms + 22 Bathrooms + 2 ADA Bathroom
- Living + Dining + Kitchen + Laundry/Utility
- Drywall Finished Interior
- Full MEP System
- Automatic Fire Sprinkler (NFPA 13D)

### Options

- Cladding
- Deck / Stair/Ramp
- Solar Panels
- Furnishings / Appliances



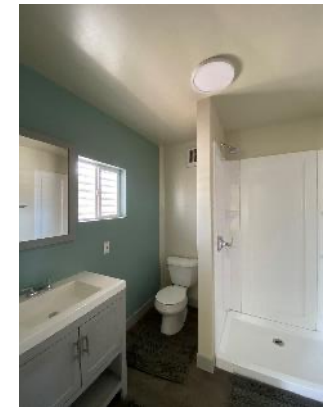
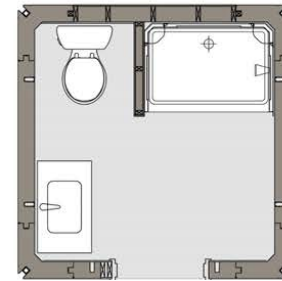
# LifeArk Housing Types- HCD Factory Built Housing

## Sanitation- Single Toilet/Shower (67 SF)

- 1 x 1 Sanitation Unit
- Full Toilet Shower Unit
- FRP Walls & Ceiling

### Options

- Automatic Fire Sprinkler (NFPA 13D)
- Cladding
- Deck / Stair / Ramp
- Solar Panels



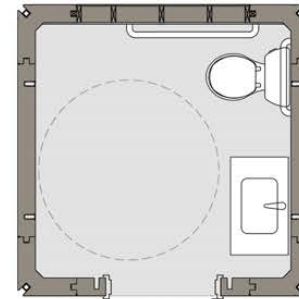
# LifeArk Housing Types- HCD Factory Built Housing

## Sanitation- Single ADA Toilet (67 SF)

- 1 x 1 Sanitation Unit
- Toilet / Washbasin
- FRP Walls & Ceiling

### Options

- Automatic Fire Sprinkler (NFPA 13D)
- Cladding
- Deck / Stair / Ramp
- Solar Panels



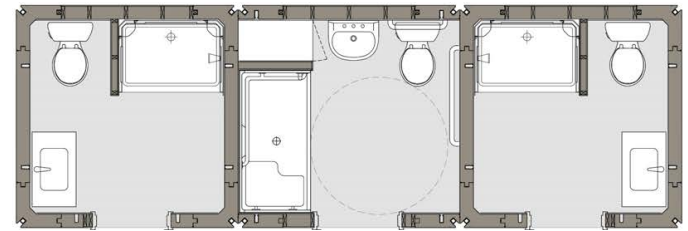
# LifeArk Housing Types- HCD Factory Built Housing

## Sanitation- Triple ADA (200 SF)

- 3 x 1 Sanitation Unit
- 2 full Toilet Shower Unit
- 1 x ADA Bathroom
- FRP Walls & Ceiling

### Options

- Automatic Fire Sprinkler (NFPA 13D)
- Cladding
- Deck / Stair / Ramp
- Solar Panels



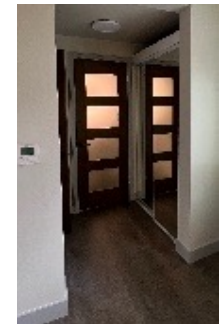
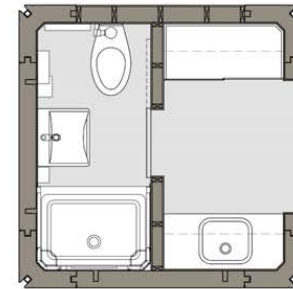
# LifeArk Housing Types- HCD Factory Built Housing

## BKC Module (67 SF)

- 1 x 1 BKC Module to Connect with Bed Module
- Full Bathing Unit
- Kitchenette and Closet
- Drywall Finished Interior for Kitchen
- FRP Walls & Ceiling for Bathroom
- Full MEP System

### Options

- Automatic Fire Sprinkler (NFPA 13D)
- Cladding
- Solar Panels
- Furnishings / Appliances





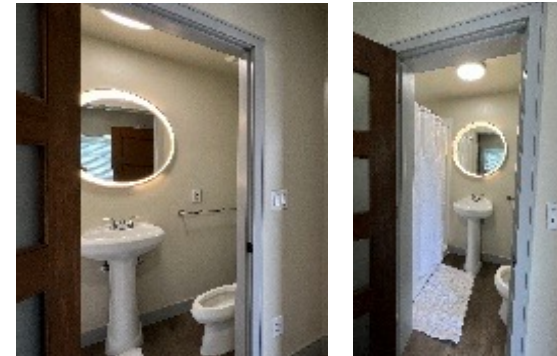
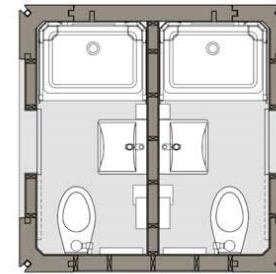
# LifeArk Housing Types- HCD Factory Built Housing

## Double Bath Module (67 SF)

- 1 x 1 Double Bathing Unit to Connect with Bed Module
- Double Bathing Units
- FRP Walls & Ceiling
- Full MEP System

### Options

- Automatic Fire Sprinkler (NFPA 13D)
- Cladding
- Solar Panels



# LifeArk Housing Types- HCD Factory Built Housing

## ADA Sanitation Cluster (533 SF)

- 8-Mod Utility and Sanitation Unit
- 5 Full Bathing Units
- 2 ADA Bathing Units
- Laundry and Utility
- FRP Walls & Ceiling
- Full MEP System

### Options

- Automatic Fire Sprinkler (NFPA 13D)
- Cladding
- Deck / Stair / Ramp
- Solar Panels
- Furnishings / Appliances



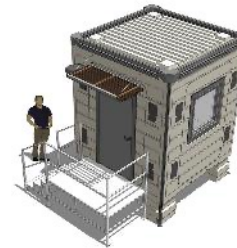
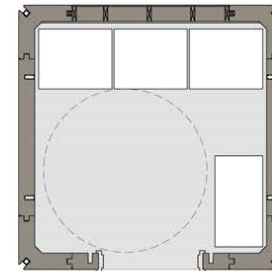
# LifeArk Housing Types- HCD Factory Built Housing

## ADA Utility/ Laundry Unit (67 SF)

- 1 x 1 ADA Laundry Unit
- Washing Machine / Dryer Shower Unit
- FRP Walls & Ceiling

### Options

- Automatic Fire Sprinkler (NFPA 13D)
- Cladding
- Deck / Stair / Ramp
- Solar Panels



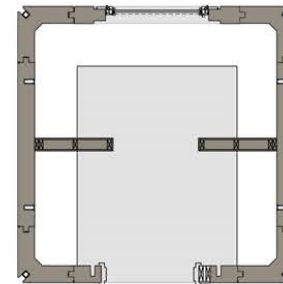
# LifeArk Housing Types- HCD Factory Built Housing

## Utility Storage Unit (67 SF)

- 1 x 1 Mech / Storage Unit
- FRP Walls & Ceiling

### Options

- Automatic Fire Sprinkler (NFPA 13D)
- Cladding
- Deck / Stair / Ramp
- Solar Panels



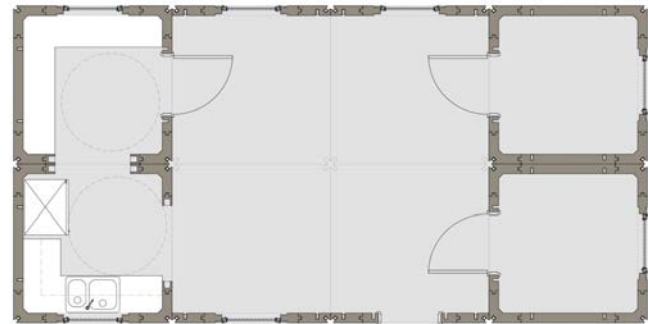
# LifeArk Housing Types- HCD Factory Built Housing

## Support- Dining/Flex (533 SF/Unit)

- 4 x 2 Dining / Flex
- Dining + Office
- Prep Kitchen + Pantry/Storage
- Drywall Finished Interior
- Full MEP System
- Automatic Fire Sprinkler (NFPA 13D)

### Options

- Cladding
- Deck / Stair/Ramp
- Solar Panels
- Furnishings / Appliances



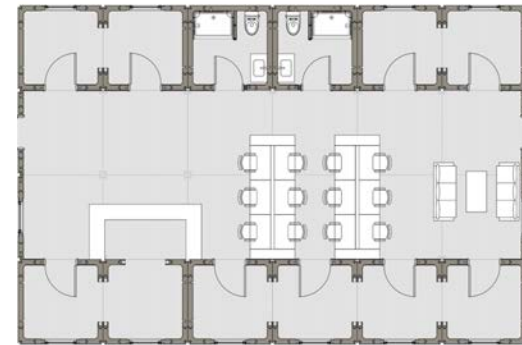
# LifeArk Housing Types- HCD Factory Built Housing

## Support- Office/ Admin (1,600 SF)

- 4 x 6 Dining / Flex
- Dining + Office + Bathroom
- Prep Kitchen + Pantry/Storage
- Drywall Finished Interior
- Full MEP System
- Automatic Fire Sprinkler (NFPA 13D)

### Options

- Cladding
- Deck / Stair/Ramp
- Solar Panels
- Furnishings / Appliances



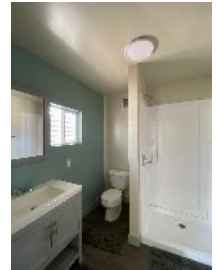
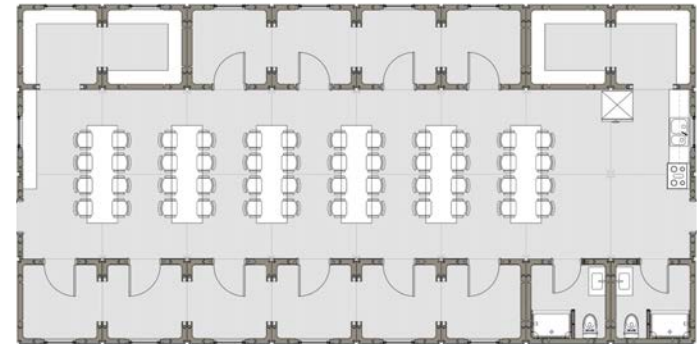
# LifeArk Housing Types- HCD Factory Built Housing

## Support- Multi-Purpose (2,134 SF/Unit)

- 4 x 8 Dining / Flex
- Dining + Office + Bathroom
- Prep Kitchen + Pantry/Storage
- Drywall Finished Interior
- Full MEP System
- Automatic Fire Sprinkler (NFPA 13D)

### Options

- Cladding
- Deck / Stair/Ramp
- Solar Panels
- Furnishings / Appliances



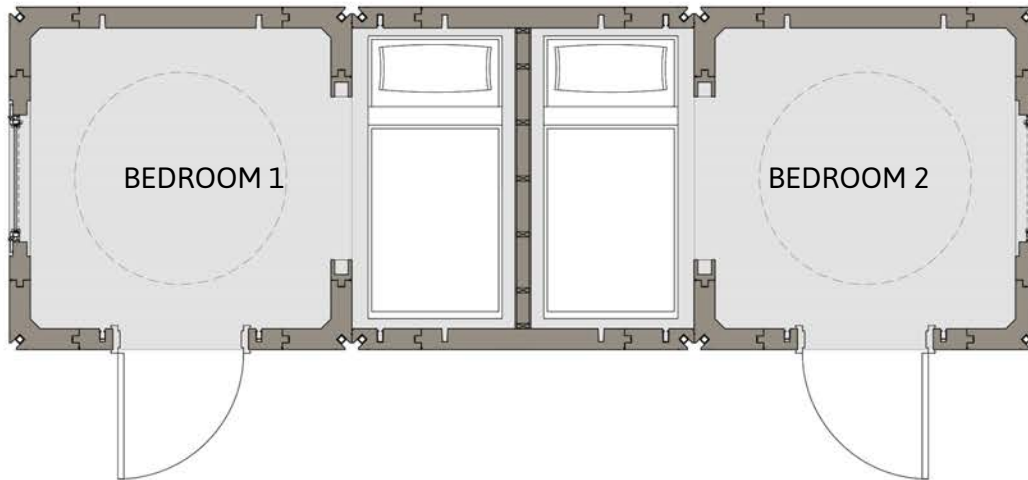




## LIFEARK 1X1 SHELTER SINGLE 67

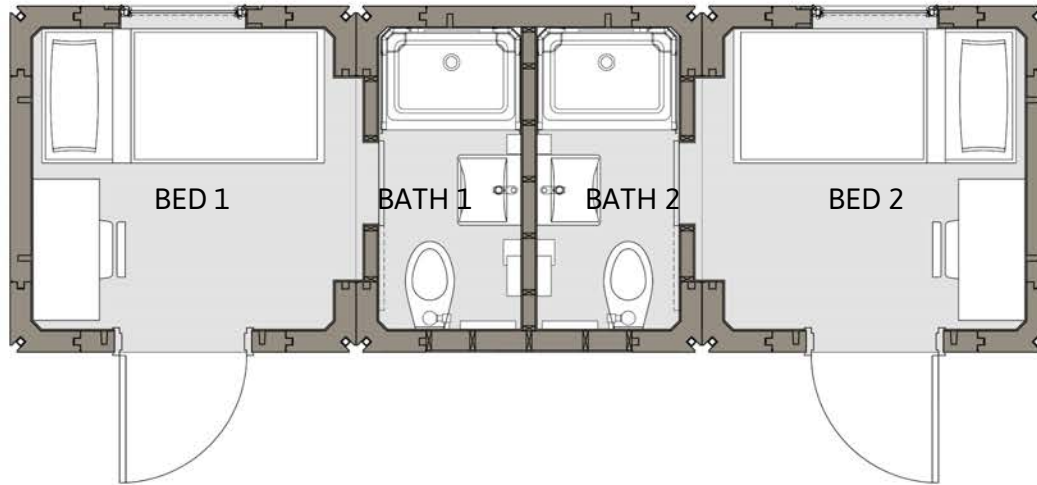
HCD MODEL LA1X1-A01-CL03-05F





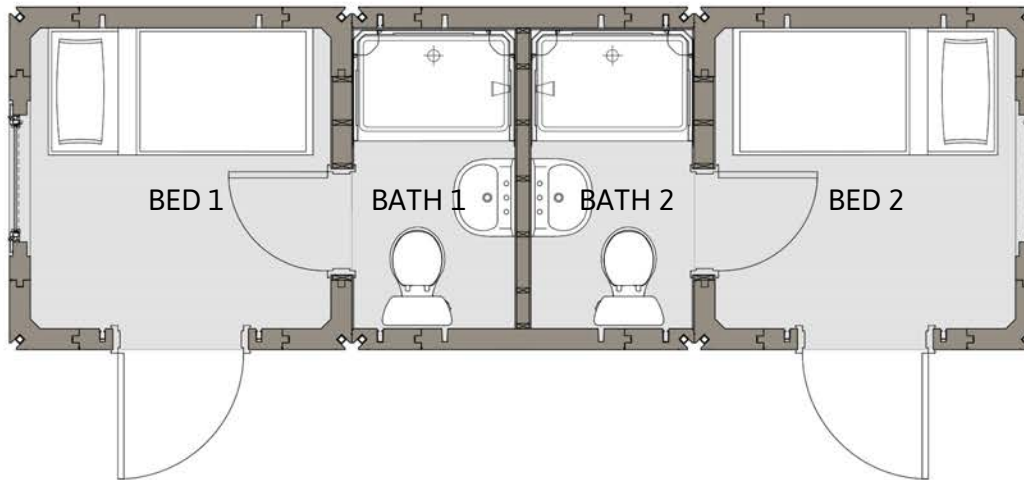
**LIFEARK 3X1 SHELTER DOUBLE 100** HCD MODEL LA3X1-A04-CL03-05F





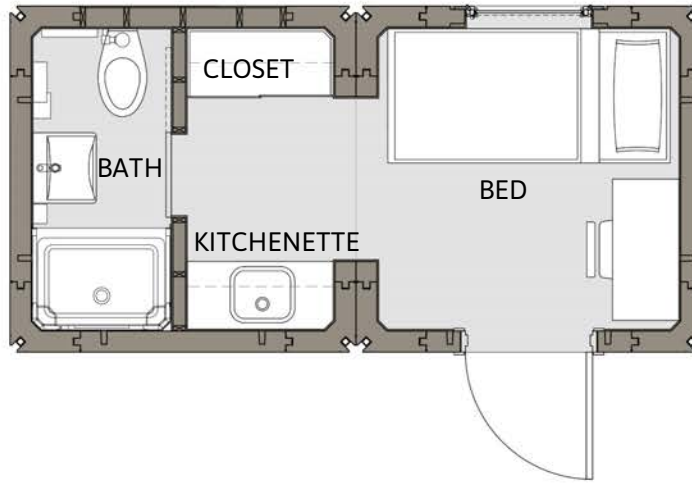
**LIFEARK 3X1 ENSUITE DOUBLE 100-1<sub>HCD</sub> MODEL LA3X1-A05-CL03-05F**





**LIFEARK 3X1 ENSUITE DOUBLE 100-2<sup>HCD</sup> MODEL LA3X1-A06-CL03-05F**

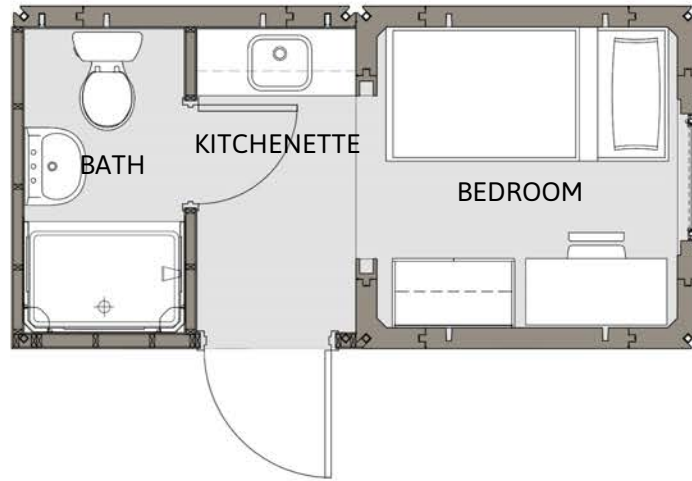




## LIFEARK 2X1 ENSUITE 133-1

HCD MODEL LA2X1-A01-CL03-05F

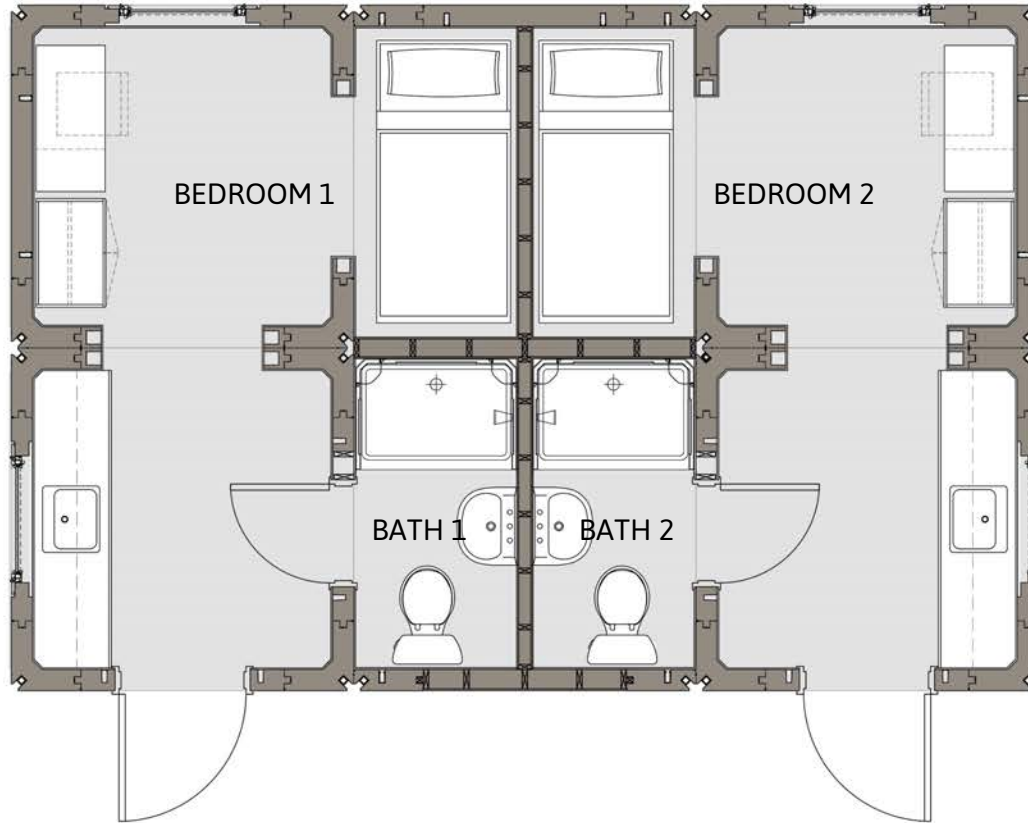




## LIFEARK 2X1 ENSUITE 133-2

HCD MODEL LA2X1-A02-CL03-05F



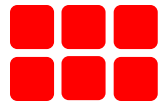


**LIFEARK 3X2 EFFICIENCY STUDIO**

HCD MODEL LA3X2-A01-HL03-05F



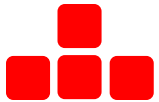
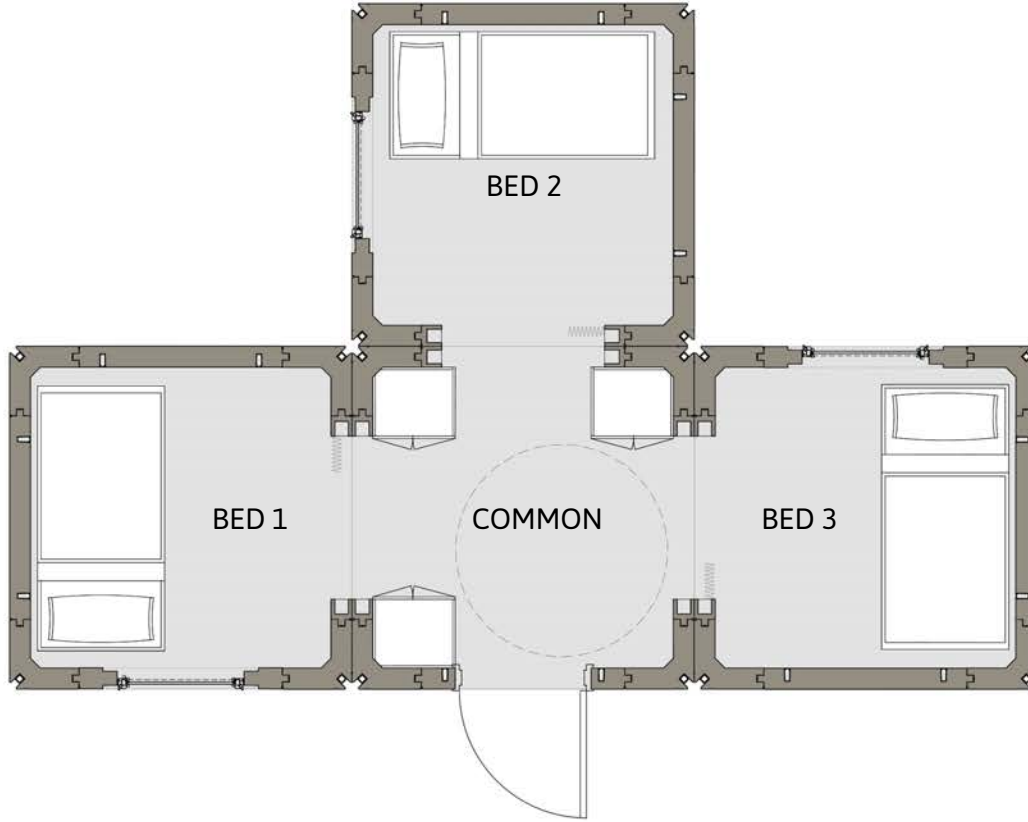




**LIFEARK 3X2 EFFICIENCY ADA  
STUDIO**

HCD MODEL LA3X2-A02-HL03-05F

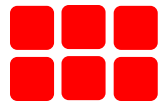




# LIFEARK 4MT 3-BED SHELTER

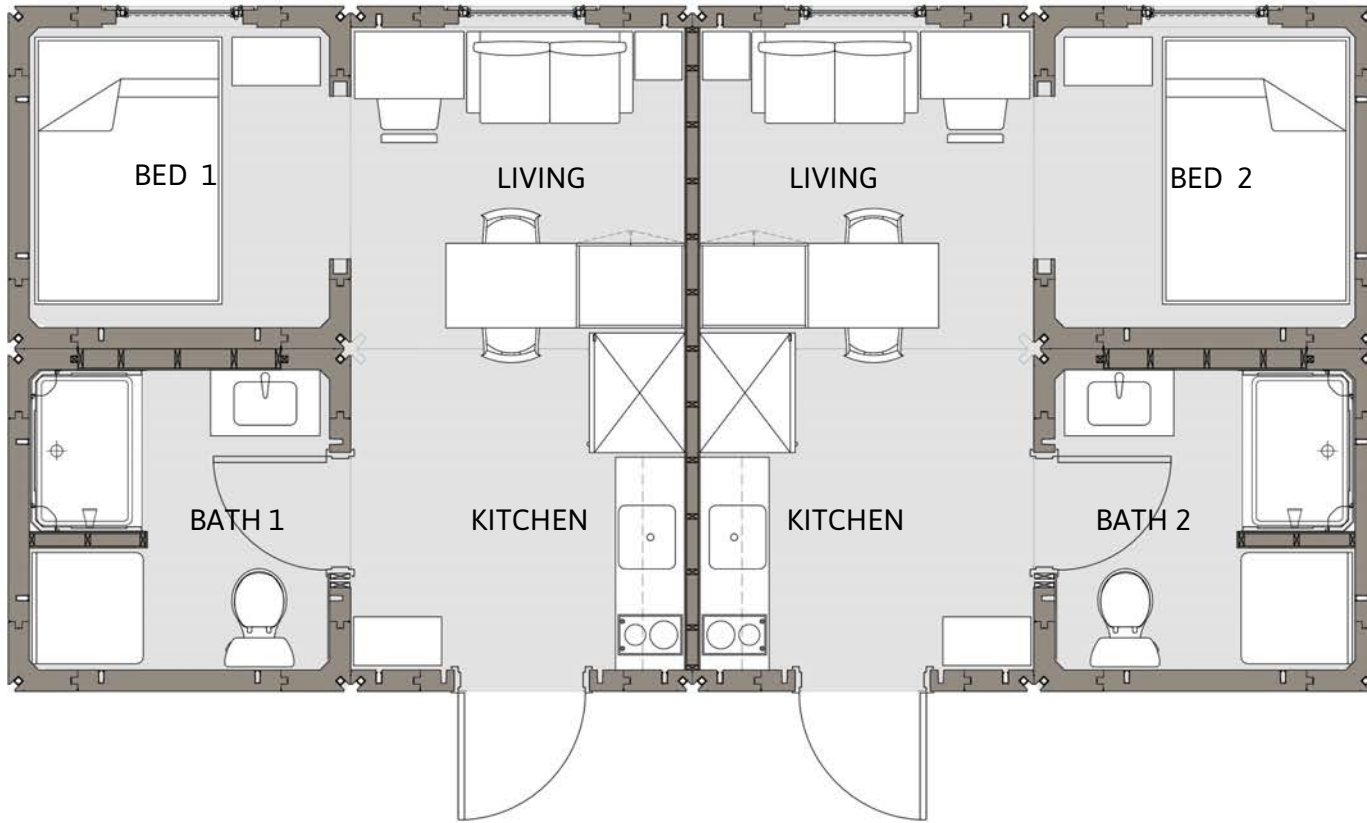
HCD MODEL LA4MT-A01A-HL03-05F





LIFEARK 3X2 ENSUITE ADA STUDIO HCD MODEL LA2X3-A01-CL03-05F





**LIFEARK 4X2 DOUBLE STUDIO**

HCD MODEL LA4X2-A01-HL03-05F

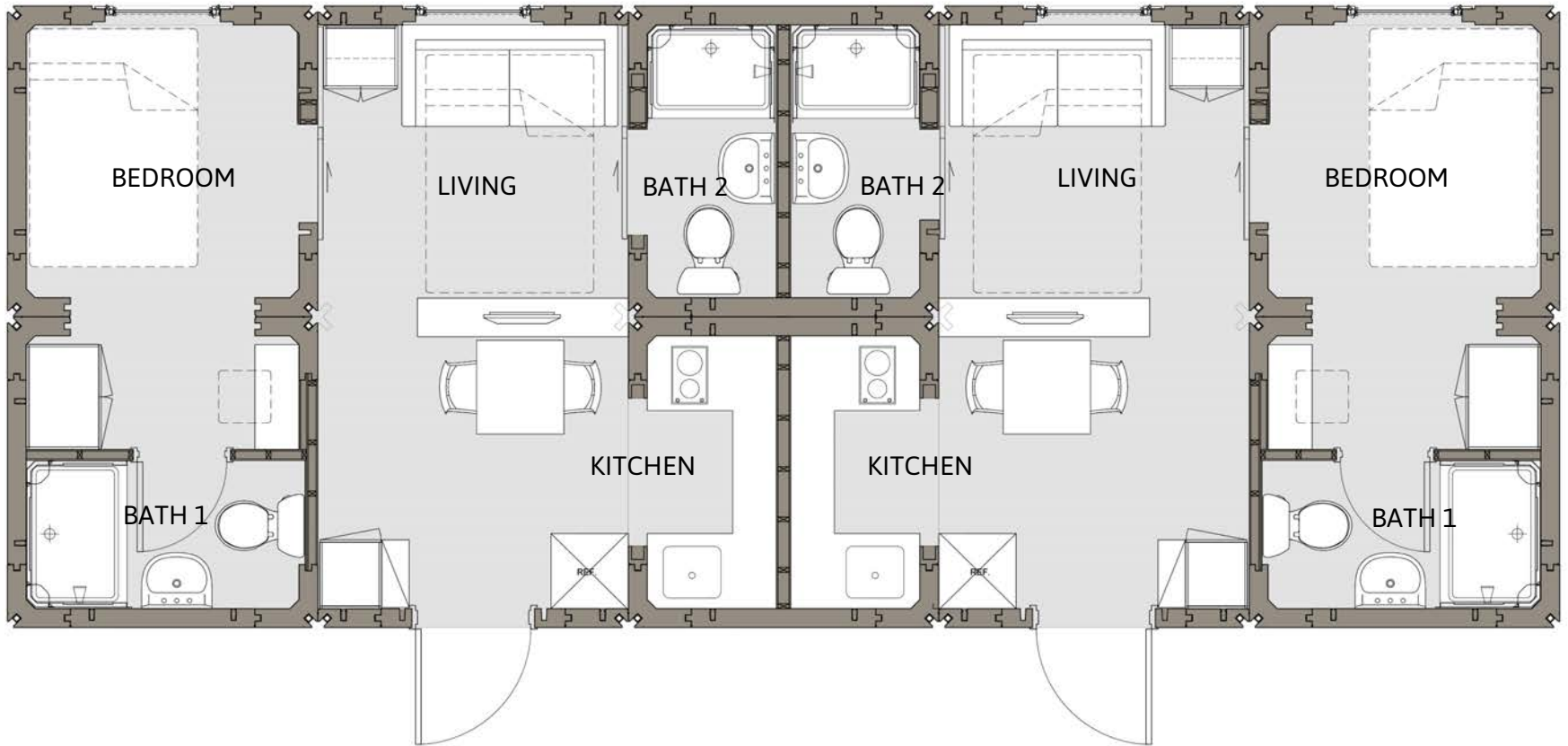




**LIFEARK 5X2 DOUBLE FAMILY- 1**

HCD MODEL LA5X2-A02-HL03-05F

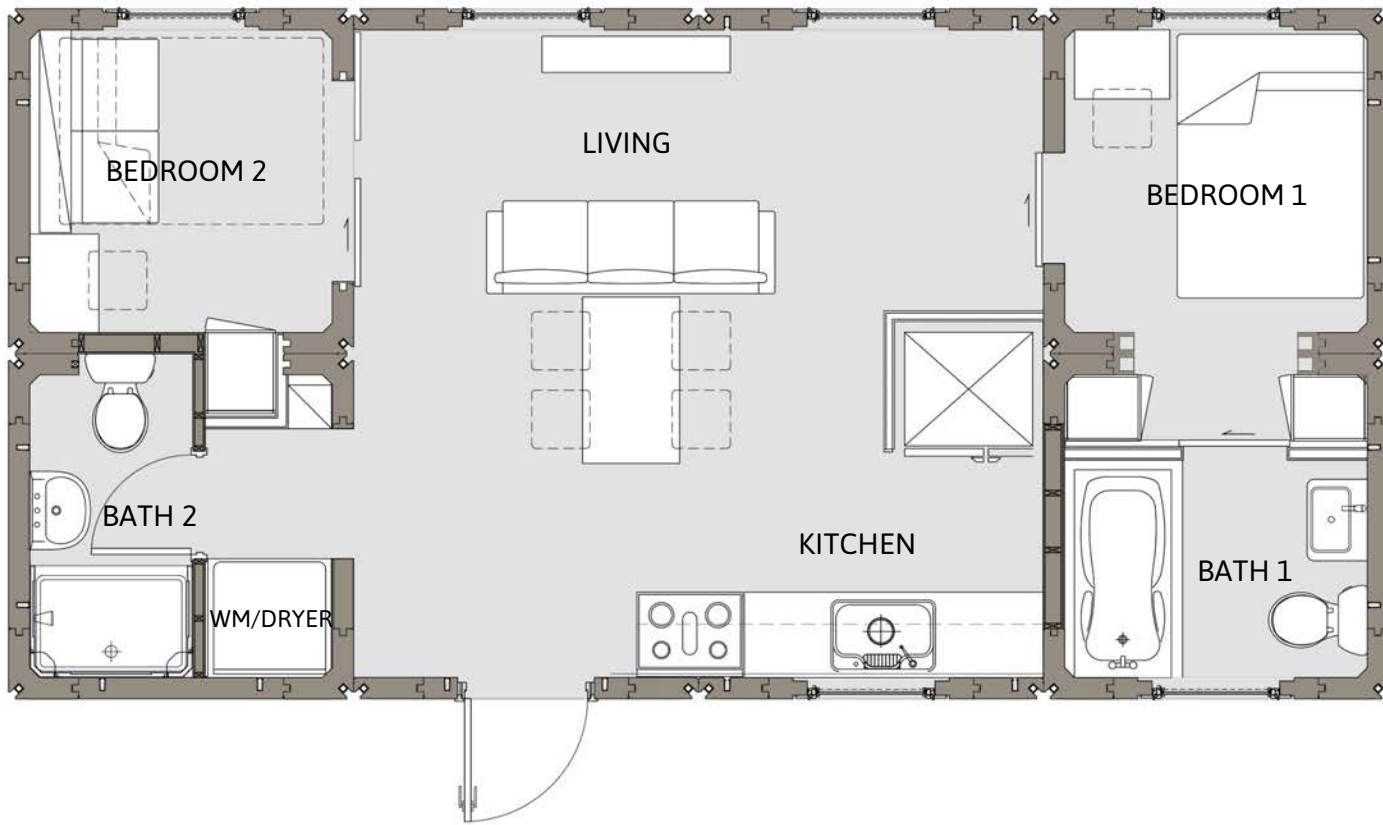




**LIFEARK 5X2 DOUBLE FAMILY- 2**

HCD MODEL LA5X2-A01-HL03-05F



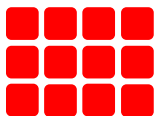
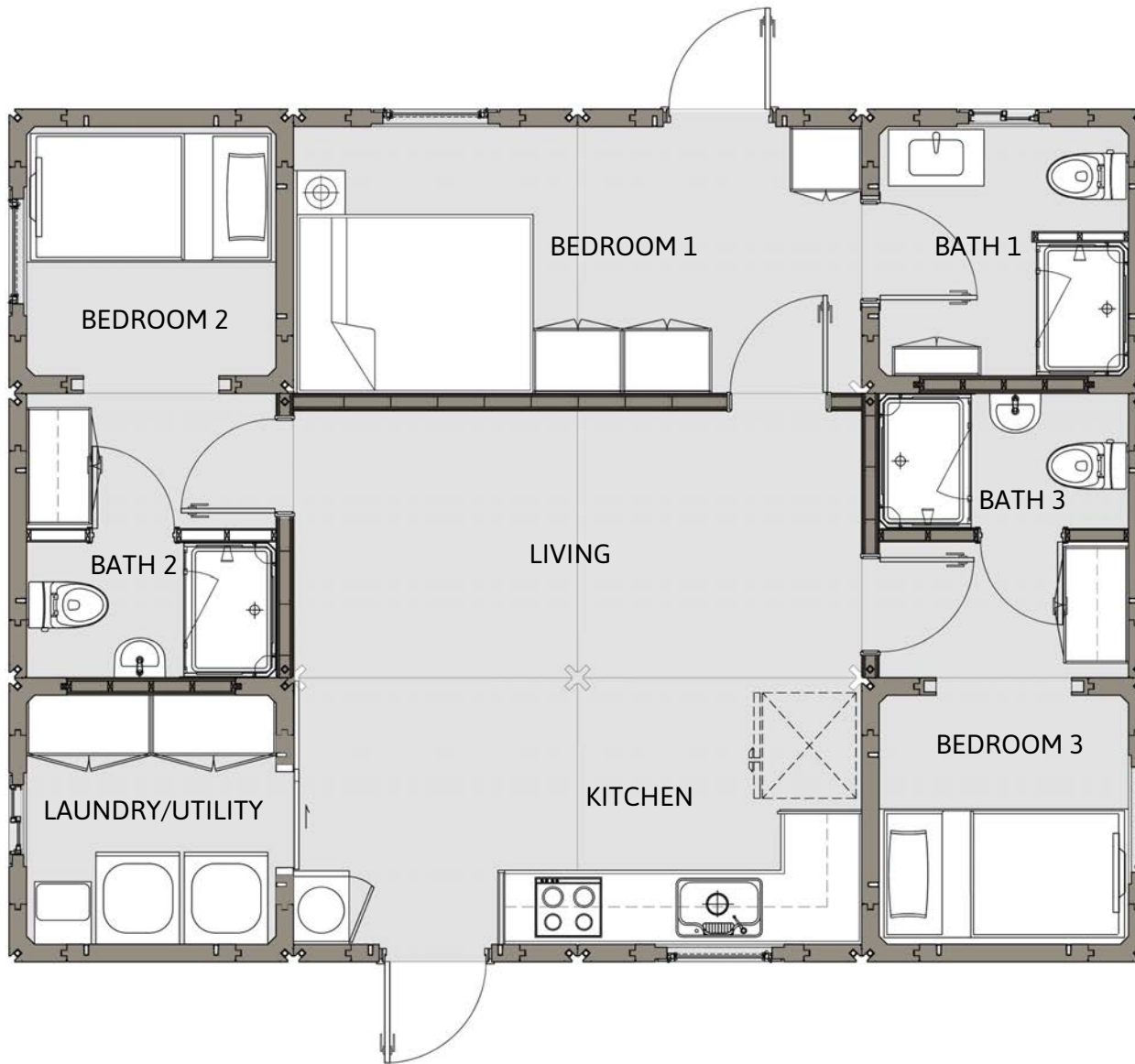


LIFeARK 4X2 FAMILY HOUSING

HCD MODEL LA4X2-A02-HL03-05F



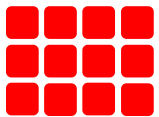
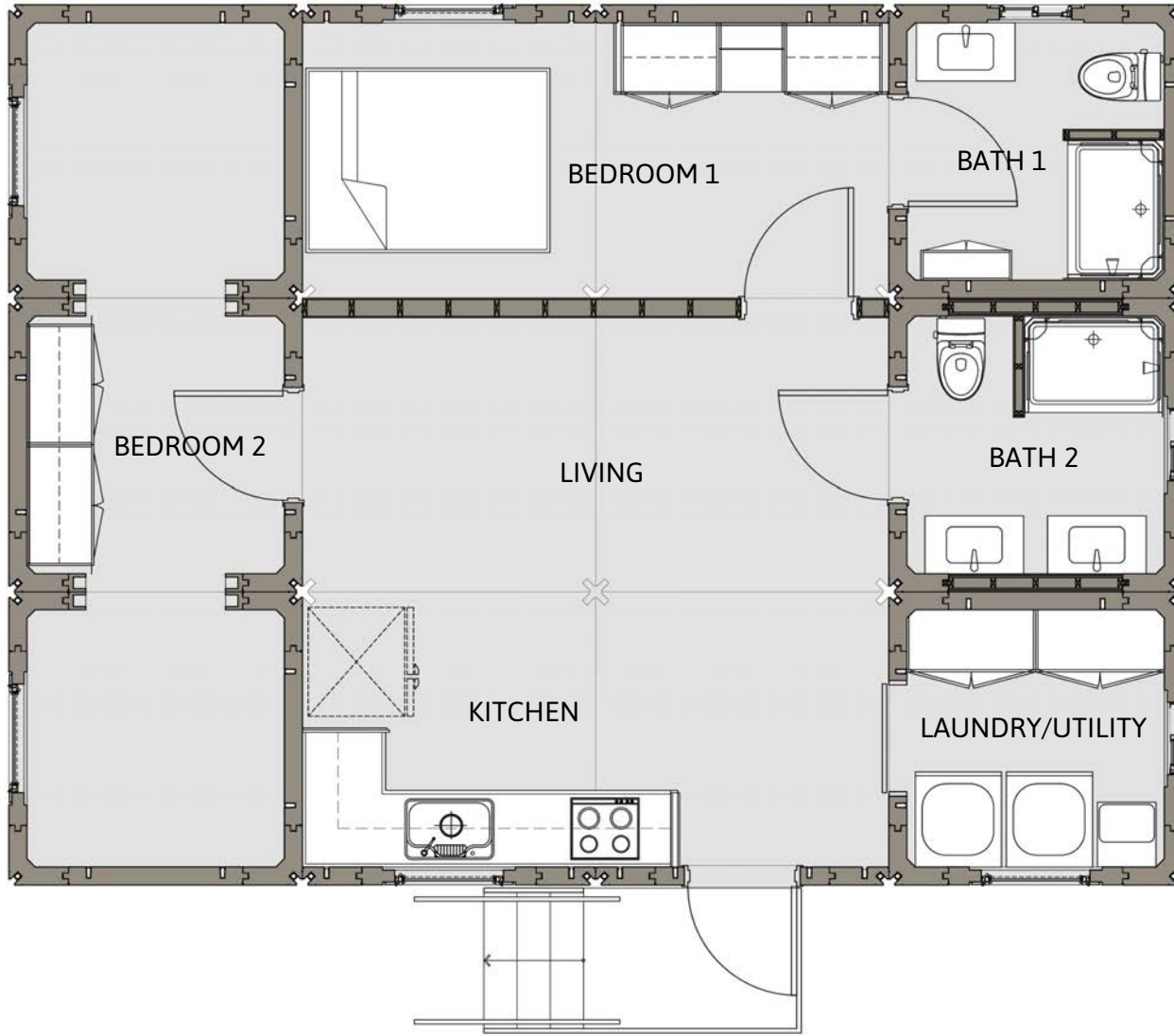




**LIFEARK 4X3 SHARED HOUSING**

HCD MODEL LA4X3-A02-HL03-01F

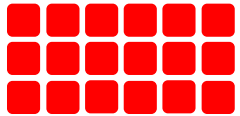
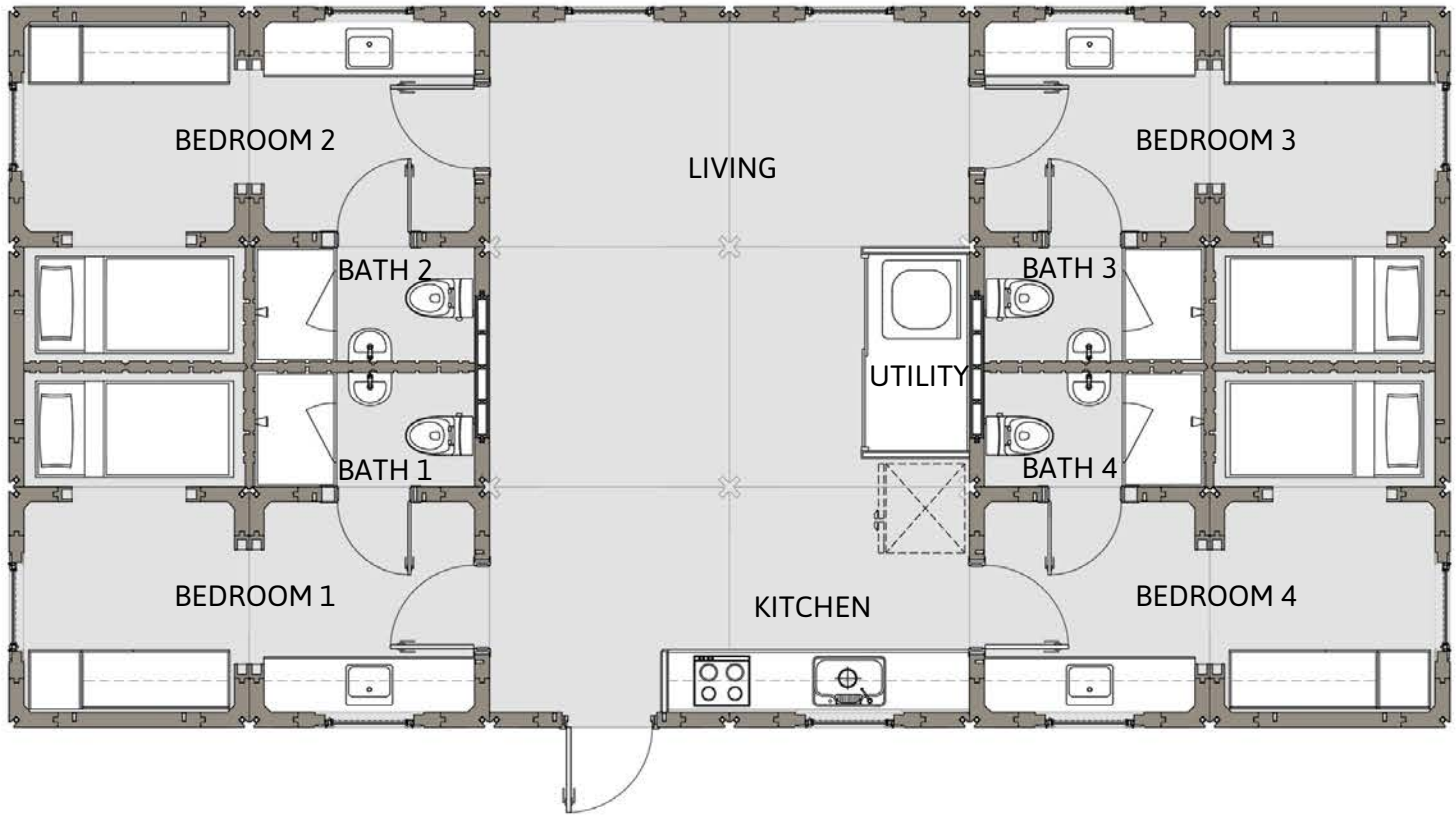




LIFEARK 4X3 ADU

HCD MODEL LA4X3-A06-HL03-03F

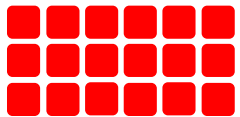
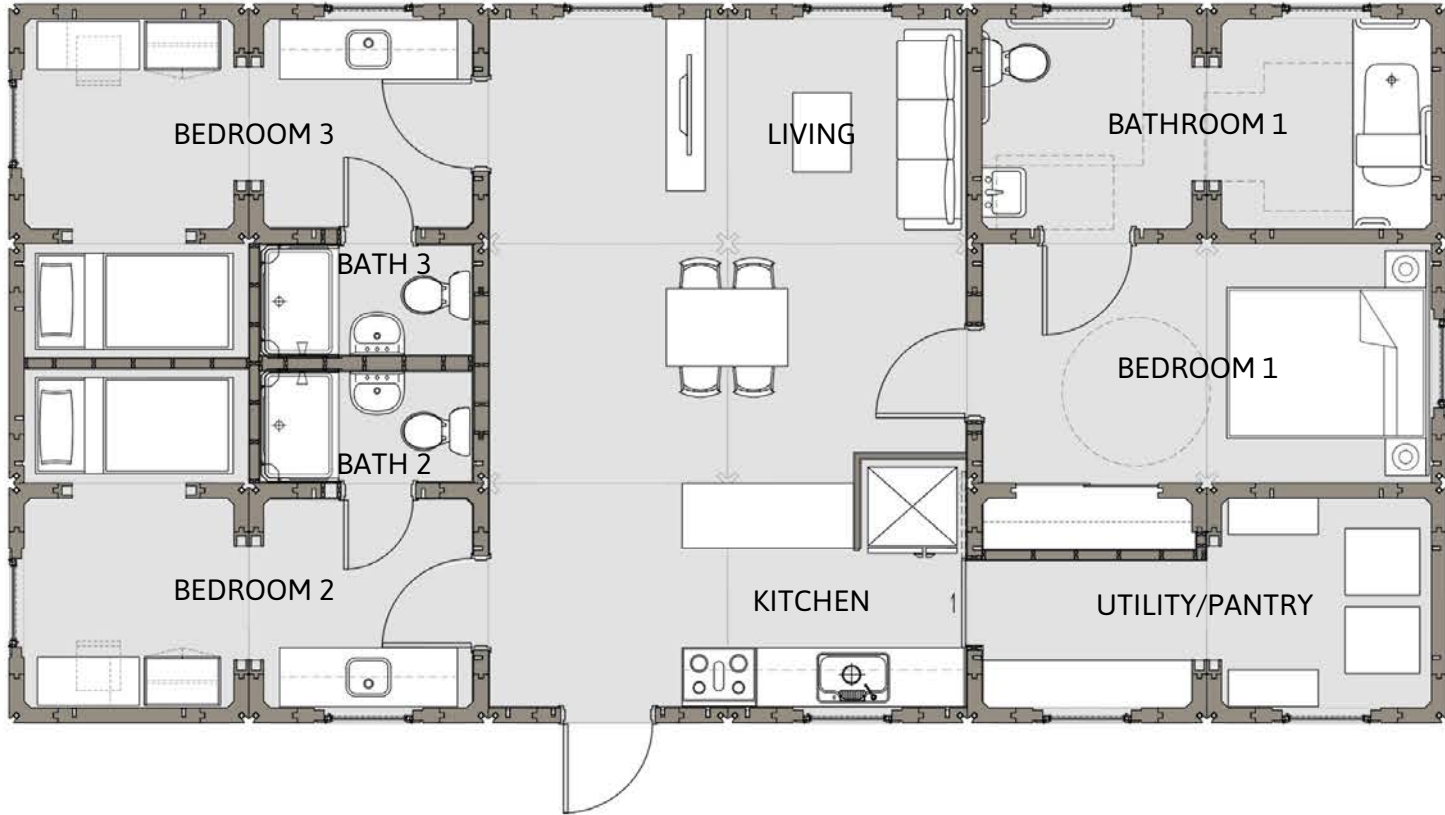




LIFeARK 6X3 SHARED HOUSING

HCD MODEL LA6X3-A03-HL03-01F

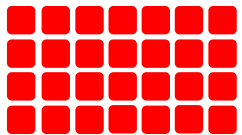
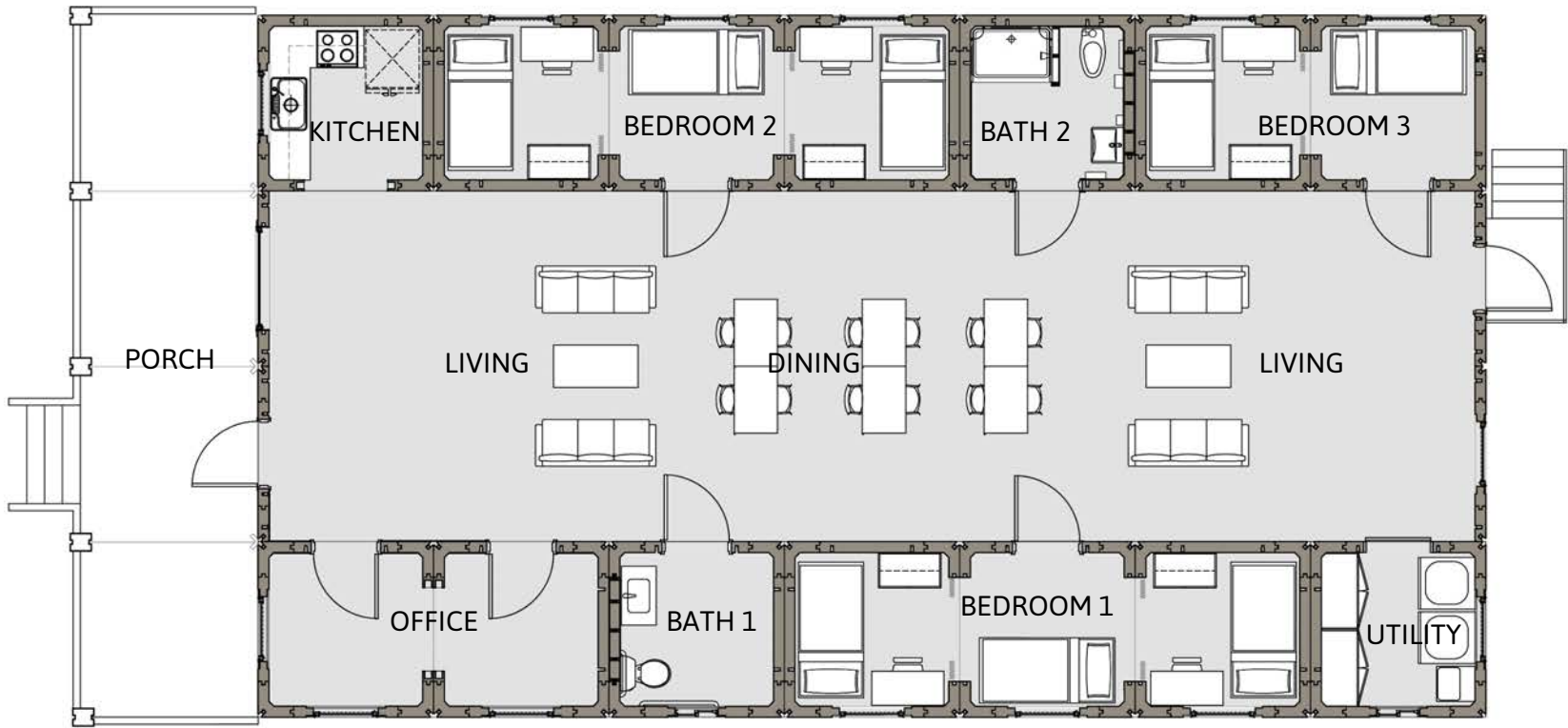




LIFeARK 6X3 FAMILY HOUSING

HCD MODEL LA6X3-A04-HL03-01F

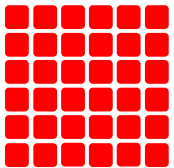




LIFeARK 4X7 SHARED HOUSING

HCD MODEL LA4X7-A01-HL03-01F



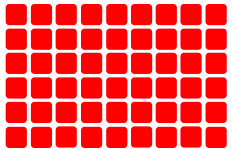
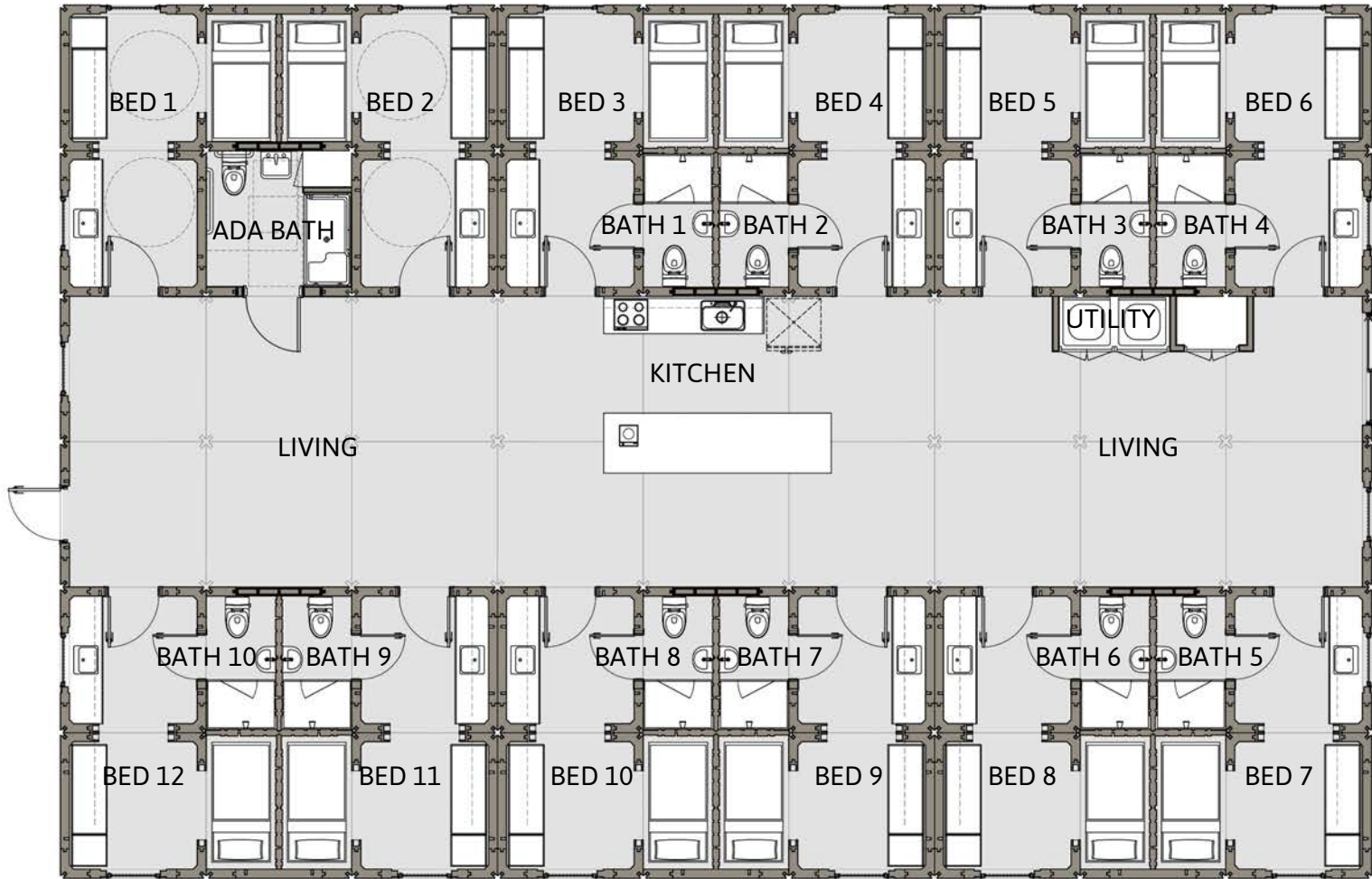


LIFeARK 6X6 SHARED HOUSING

HCD MODEL LA6X6-A01-HL03-01F







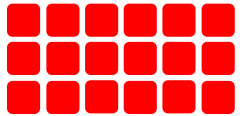
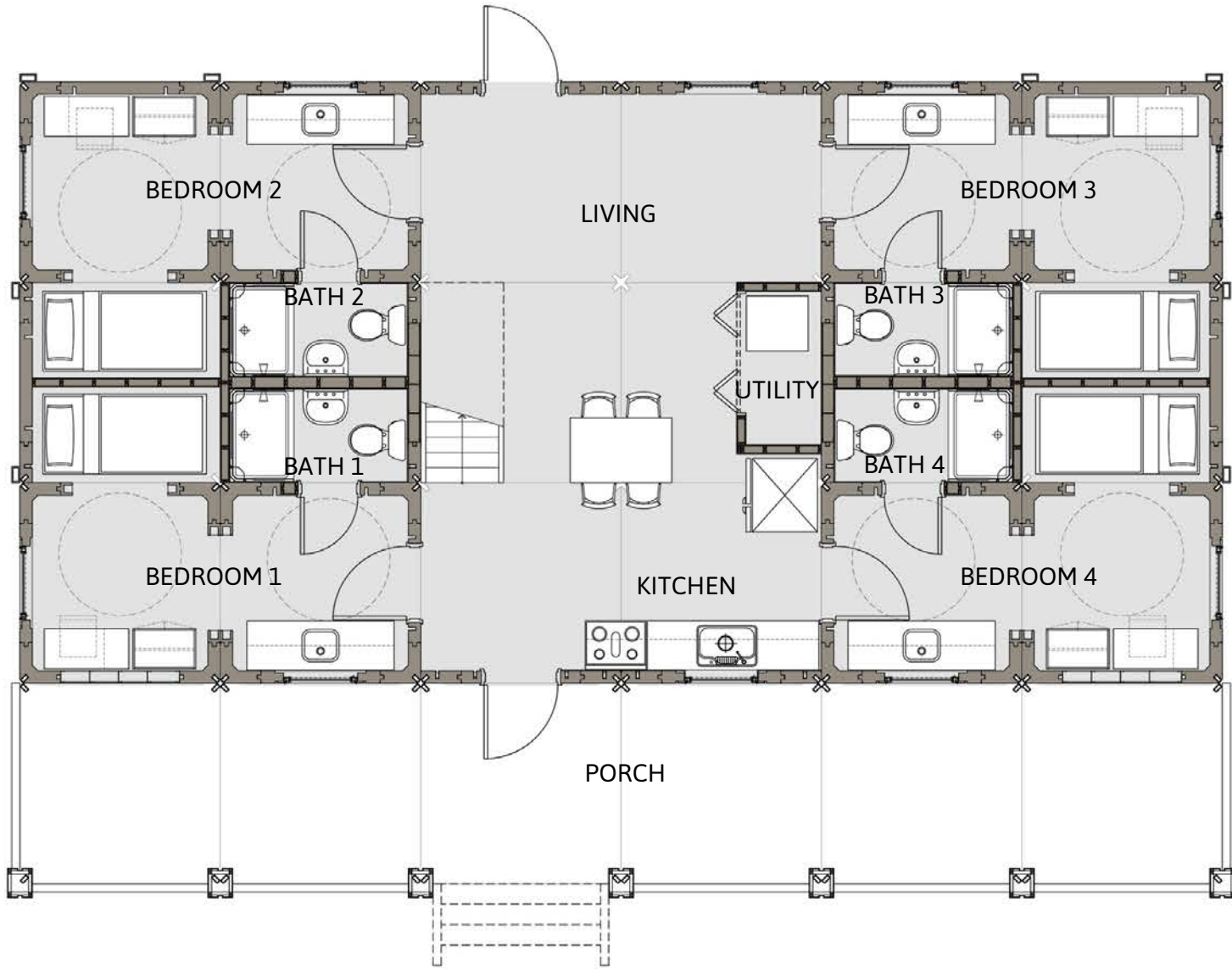
LIFeARK 6X9 SHARED HOUSING

HCD MODEL LA6X9-A03-HL03-01F



0 2 4 8ft

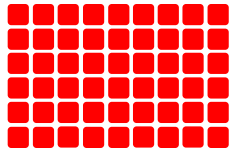
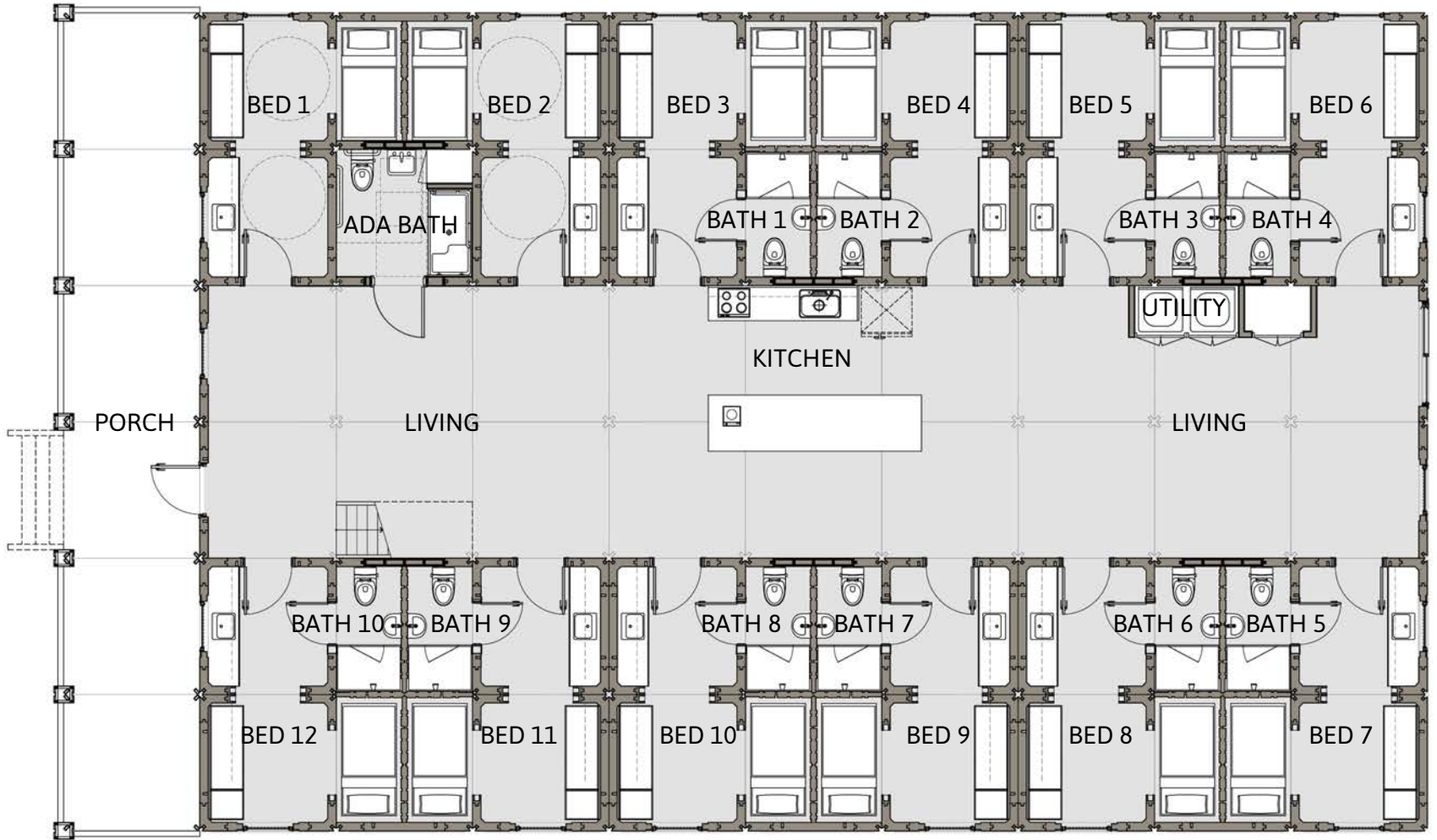




LIFeARK 6X3 2 STORY SHARED

HCD MODEL LA2ST6X3-A01-HL03-01F





LIFEARK 6X9 2 STORY SHARED

HCD MODEL LA2ST6X9-A01-HL03-01F

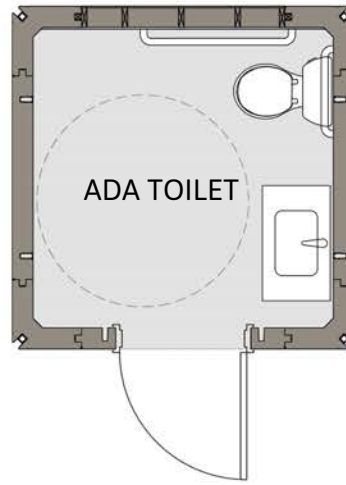




**LIFEARK 1X1 BATHING UNIT**

HCD MODEL LA1X1-A02-CL03-05F





## LIFEARK 1X1 ADA TOILET UNIT

HCD MODEL LA1X1-A03-CL03-05F

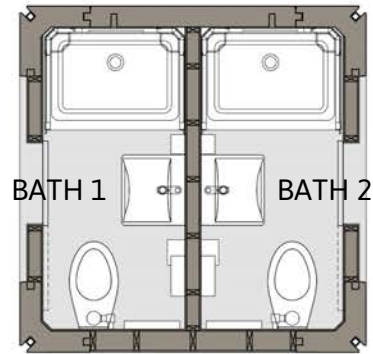




**LIFEARK 1X1 BKC MODULE**

HCD MODEL LA1X1-A07-CL03-05F

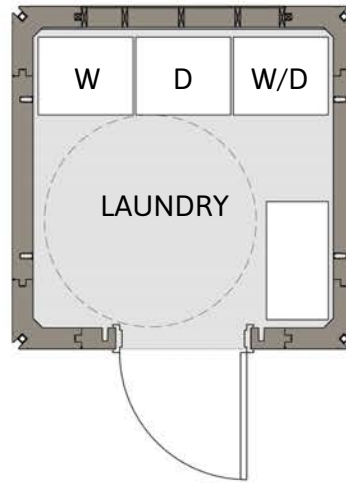




## LIFEARK 1X1 DOUBLE BATHING

HCD MODEL LA1X1-A04-CL03-05F

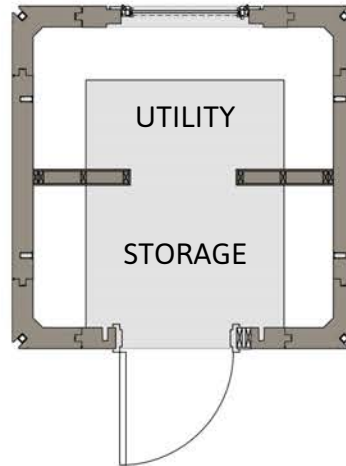




**LIFEARK 1X1 LAUNDRY**

HCD MODEL LA1X1-A05-CL03-05F





# LIFEARK 1X1 STORAGE

HCD MODEL LA1X1-A06-CL03-05F



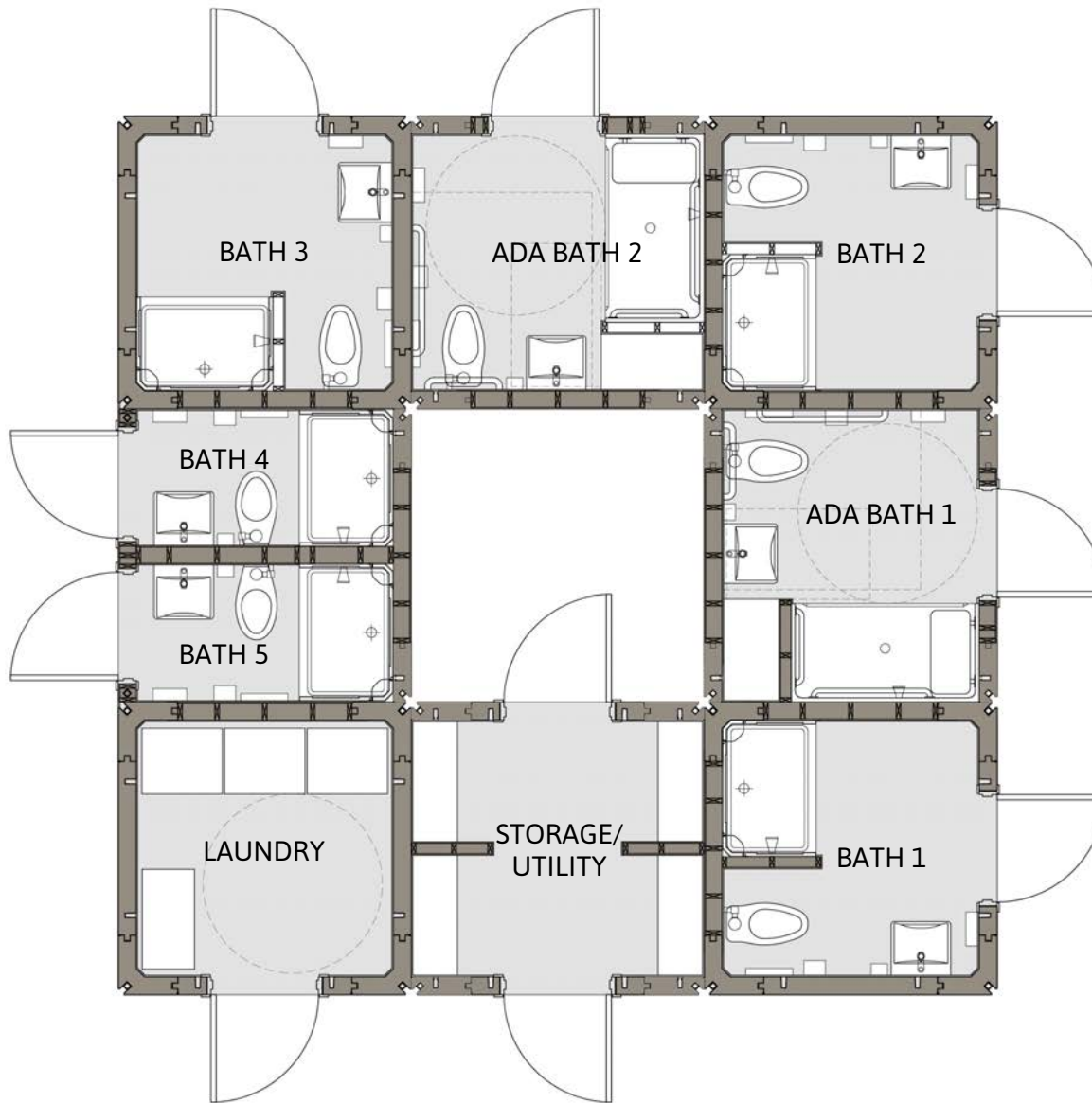




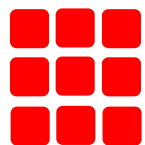
## LIFEARK 3X1 BATHING

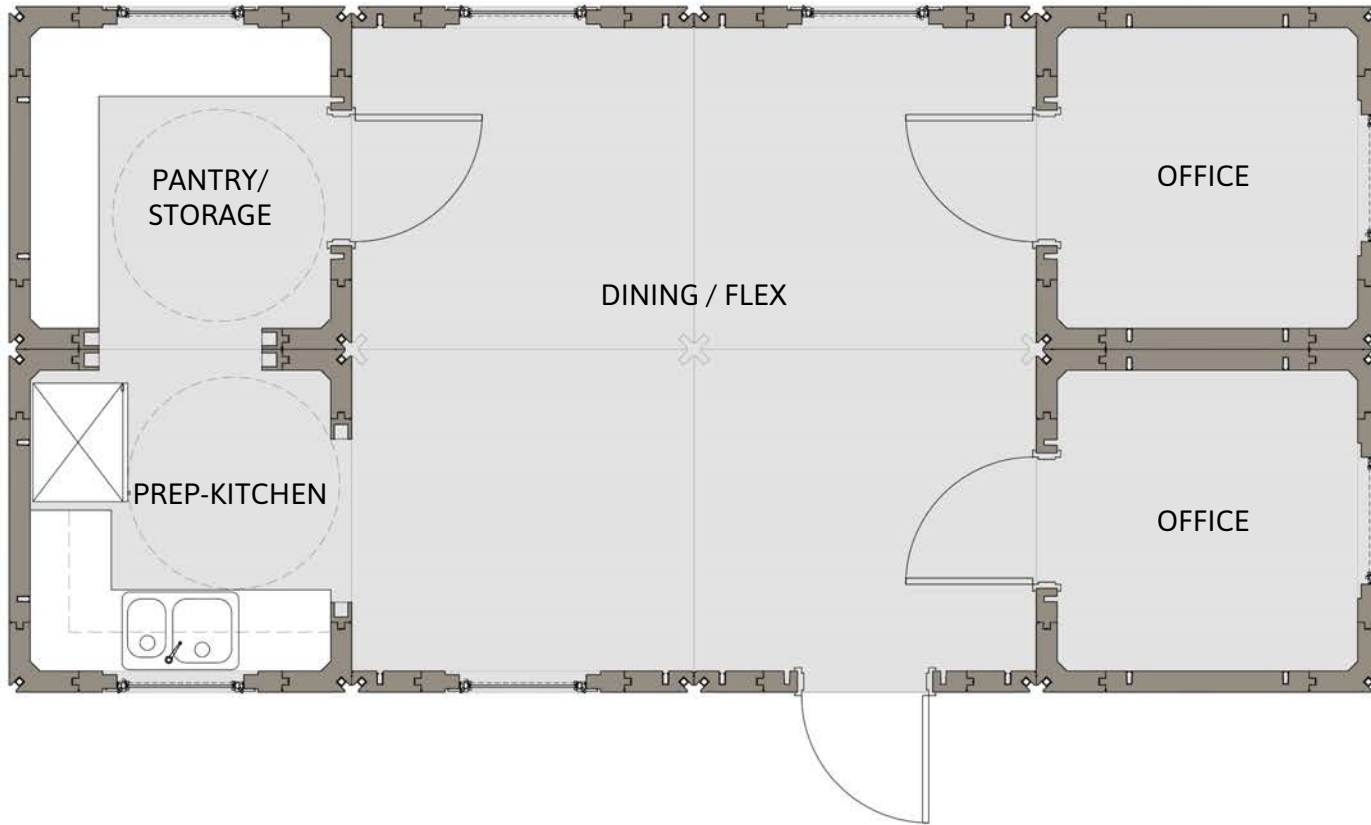
HCD MODEL LA3X1-A03-CL03-05F





**LIFEARK 8MO SANITATION CLUSTER** HCD MODEL LA8MO-A01-CL03-05F

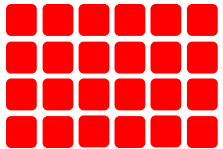
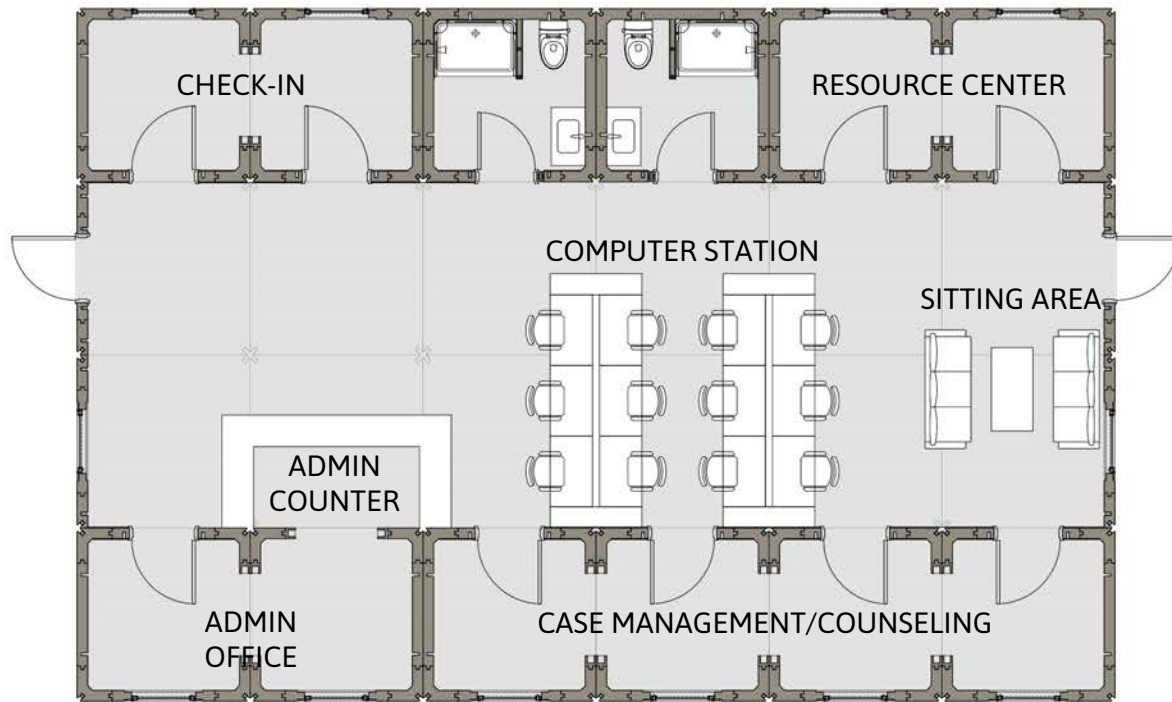




## LIFEARK 4X2 DINING/FLEX

HCD MODEL LA4X2-A01-CL03-05F

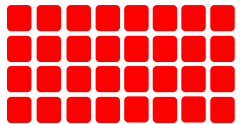
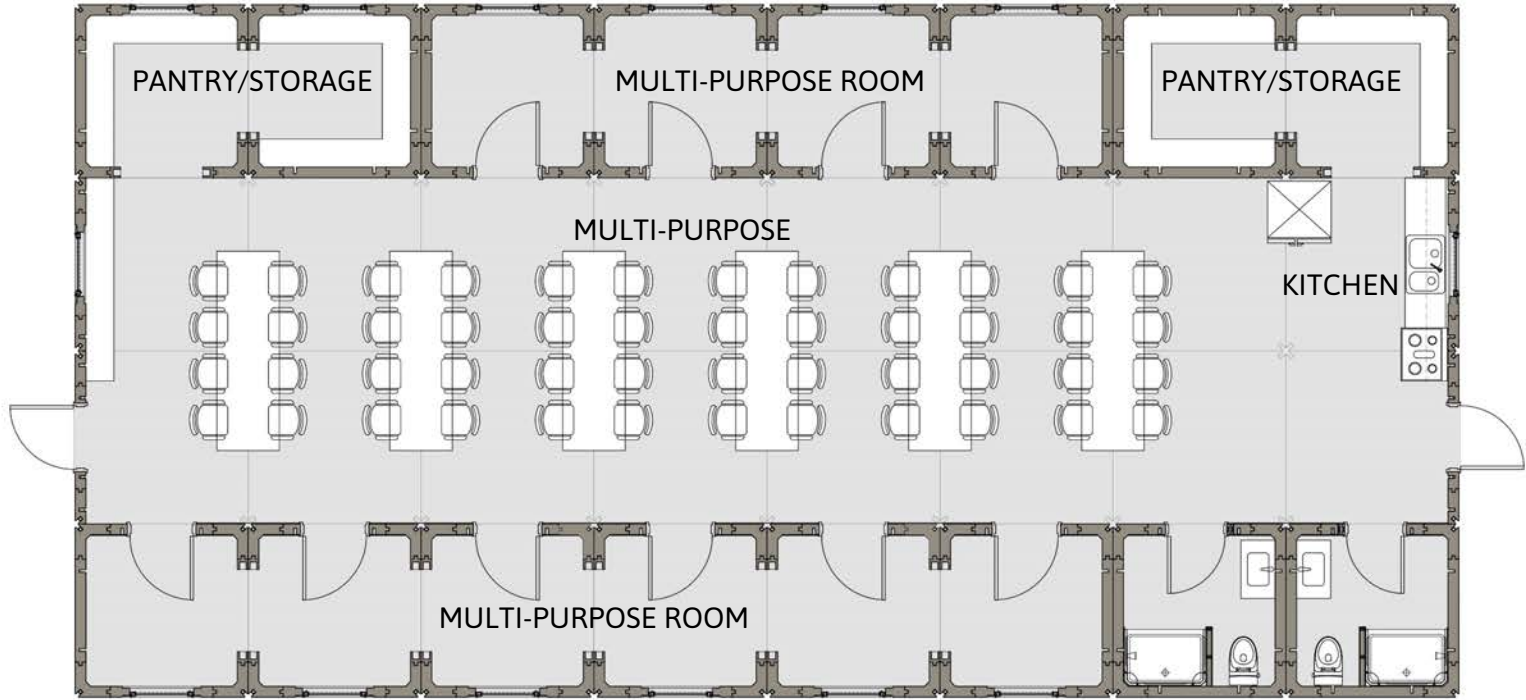




LIFEARK 4X6 ADMIN

HCD MODEL LA4X6-A01-CL03-05F





LIFEARK 4X8 MULTI-PURPOSE

HCD MODEL LA4X8-A01-CL03-05F



# LIFEARK SCOPE OF SERVICES

- 1) Module Manufacturing and Delivery**
  - a) Manufacture rotomolded parts
  - b) Foam rotomolded parts
  - c) Test parts for conformance
  - d) Pack and ship rotoparts to assembly factory
- 2) Base Module Assembly**
  - a) Assemble base modules
  - b) Fasten base module using structural hardware
- 3) Roof Module Assembly**
  - a) Assemble roof modules
  - b) Fasten roof module using structural hardware
- 4) Unit Module Assembly**
  - a) Connect base modules using structural hardware
  - b) Connect roof module using structural hardware
- 5) Unit Module- Electrical Installation and Assembly**
  - a) Install rough electrical
  - b) Install electrical fixtures
  - c) Install exterior lights
  - d) Install thermostats
  - e) Install smoke & CO2 detectors
  - f) Install rough ins for low voltage
  - g) Test electrical system
- 6) Unit Module- HVAC Installation and Assembly**
  - a) Install exhaust fans
  - b) Install AC / Heating system
  - c) Install dryer vent
  - d) Test HVAC system
- 7) Unit Module- Plumbing Installation and Assembly**
  - a) Install rough plumbing
  - b) Install plumbing fixtures
  - c) Install water heater
  - d) Install gas lines
  - e) Test plumbing system
  - f) Test gas line system
- 8) Unit Module- Fire Sprinklers Installation and Assembly**
  - a) Install fire sprinkler manifolds
  - b) Install fire sprinkler heads, supply lines and stub downs
  - c) Install fire sprinkler alarm system
  - d) Test fire sprinkler system
- 9) Unit Module- Door and Windows Assembly**
  - a) Install Door
  - b) Install Window
  - c) Fabricate and install plumbing wall
- 10) Unit Module- Architectural Assembly**
  - a) Install drywall and paint
  - b) Install flooring
  - c) Install trims and baseboards
  - d) Install kitchen sinks, cabinet, and counters
  - e) Install bathroom cabinets
- 11) Unit Module Delivery Preparation**
  - a) Secure ship loose items
  - b) Pack site assembly parts
  - c) Prep completed unit modules for shipping
- 12) Options / Upgrades**
  - a) Exterior cladding
  - b) Exterior vine mesh
  - c) Decks / Railings
  - d) Stairs and ramps
  - e) Radiant heating & cooling system
  - f) Solar system
  - g) Other off-grid systems
  - h) Interior furniture & appliances
  - i) Outdoor furniture
- 13) Exclusions**
  - a) FB module rigging & transport to site
  - b) Module unloading and site setting
  - c) Intermodular connections
  - d) Module anchoring to foundation
  - e) Module connection to main site utilities
  - f) All sitework
  - g) Landscaping & hardscaping