

**LifeArk™**

**RAPID LOW-COST SHELTER/INTERIM HOUSING MODULARS**

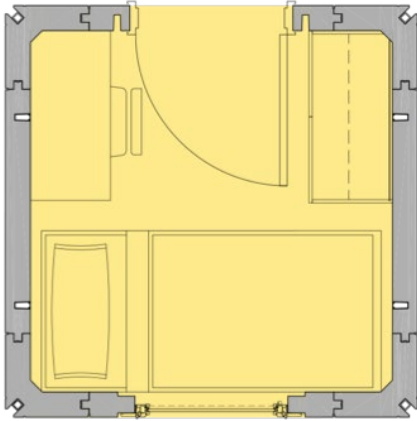
FEBRUARY 2023      LIFEARK SPC

# LIFEARK MODULAR HOUSING SYSTEM



- HCD-approved for use as shelter, interim or permanent housing
- Single 8 ft X 8 ft module can be used as a shelter – multiple modules can be configured together to create community for individuals or families
- Each basic module can be assembled within an hour
- Simple foundation system allows for use on multiple ground surfaces, such as compacted dirt or concrete
- Bathroom, kitchen and laundry modules can be added to create interim or permanent housing
- Fire sprinkler and other options available
- Approved to use PCR (post consumer recycled) plastic in raw material – up to 30%

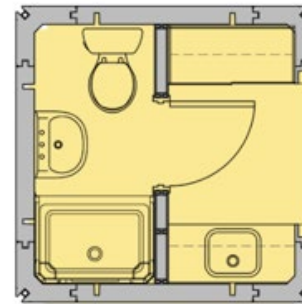




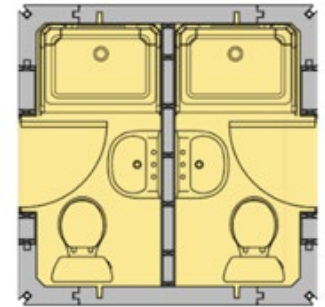
## Shelter Bed Single

- 1 x 1 Single Shelter (65 sf)
  - Power / lighting
  - Wall AC / heater
- Options**
- Automatic Fire Sprinkler (NFPA 13D)
  - Drywall or MgO Painted Interior
  - Cladding
  - Deck / Stair/Ramp
  - Solar Panels
  - Furnishing / Appliances

## Other Single Modules

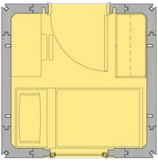


Bath/Kitchen



Double Bath

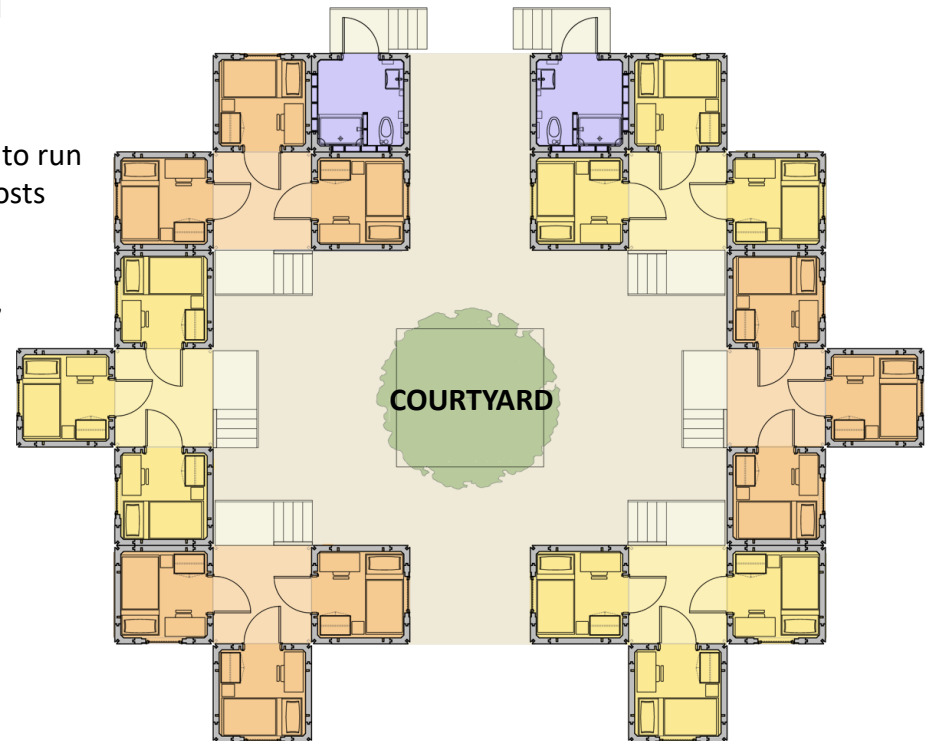


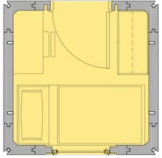


**X 20 = 18 BED SHELTER + 2 SHARED BATH**

## 18 BED SHELTER COMMUNITY CLUSTER

- Single bed modules and bathroom modules can be configured together around a courtyard to create a secure and dignified shelter community
- Individual bed modules can be reconfigured for families
- Raised floor with 22" clear crawl space allows for all utilities to run under the building above the ground to minimize sitework costs
- Can fit on 7,000 SF site
- 4 weeks for assembly & ready for move-in if site is prepared, including utility connections

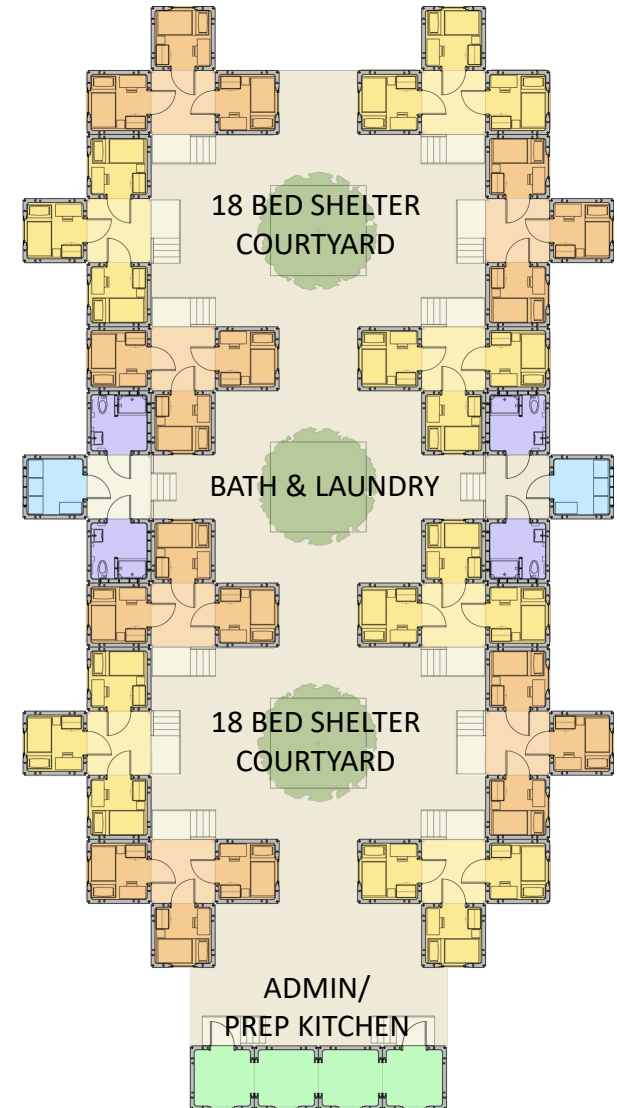




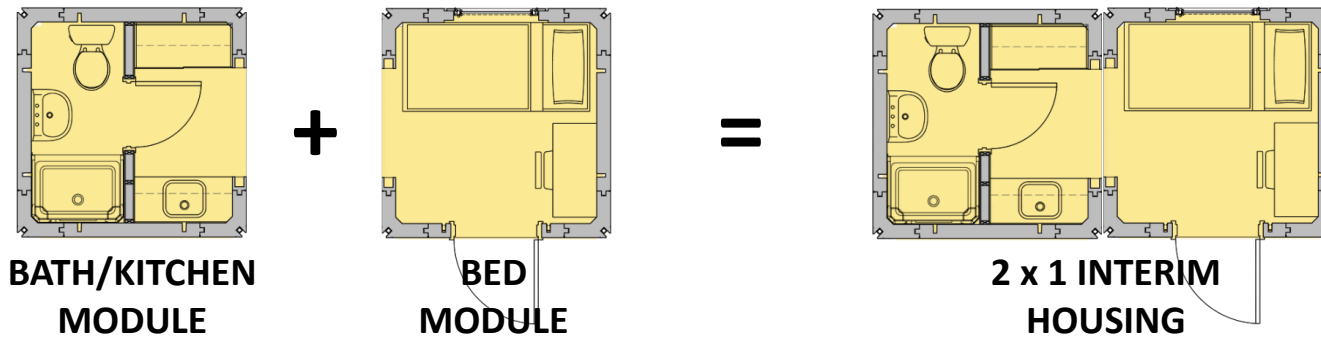
**X 42 = 36 BED SHELTER  
+ SHARED BATH & LAUNDRY  
+ ADMIN/PROGRAM SPACE**

## 36 BED SHELTER COMMUNITY CLUSTER

- Additional clusters and modules can be configured to create larger shelter community with offices
- Can fit on 9,000 SF site
- 8 weeks for assembly & ready for move-in if site is prepared, including utility connections
- Small footprint of each module (8 ft x 8 ft) allows flexibility to create shelter configurations on any odd-shaped lots

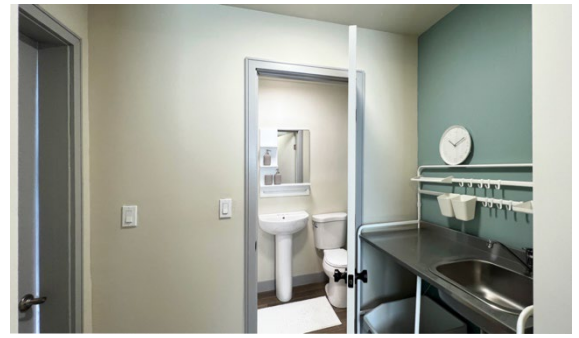
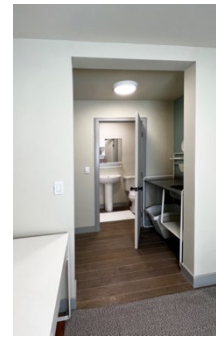


# LIFEARK SHELTER FLEXED TO CREATE INTERIM HOUSING



## LIFEARK'S DURABILITY ALLOWS FOR USE AS INTERIM HOUSING

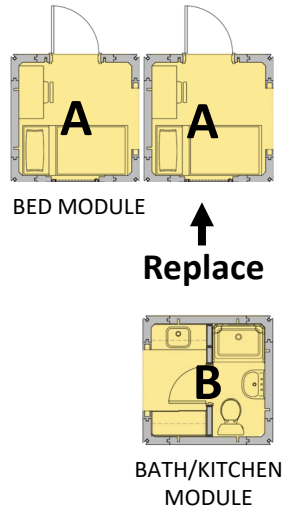
- Bathroom and/or kitchen modules can be added to bed modules to create interim housing when longer stays are required
- Can be designed for individuals or families of varying sizes



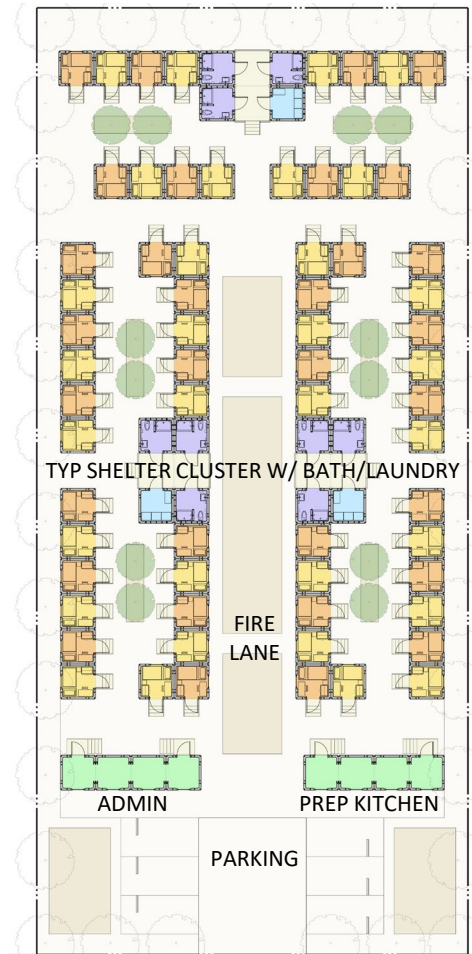
# SHELTER RECONFIGURED TO INTERIM HOUSING

## SHELTER RECONFIGURATION

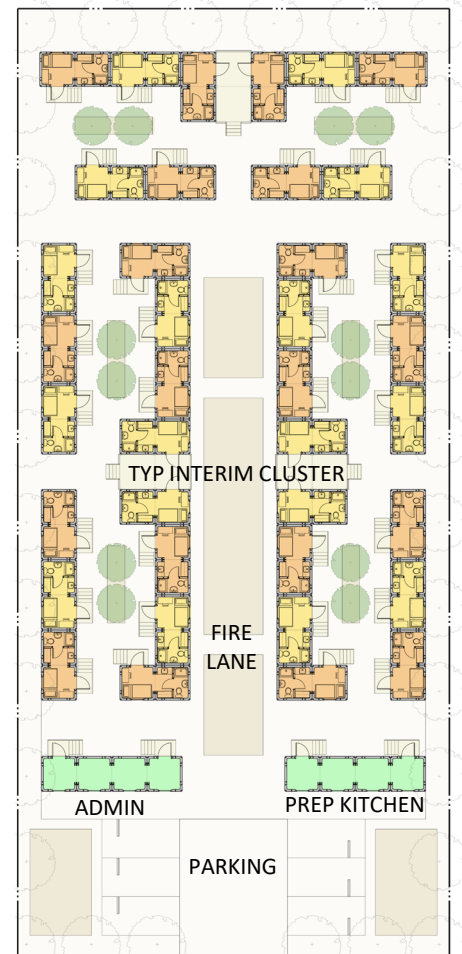
- By replacing bed modules with bath/kitchenette modules, shelter sites can be reconfigured as interim housing when the need changes
- LifeArk modules can also be dissembled and moved to a new location



Can Grow into a 400 Bed Shelter Community



64 Bed Shelter On 20,000 SF site with Support Services



Converted to 38 Interim Units on same site with Support Services

# LIFEARK EL MONTE PSH (HOUSING INNOVATION CHALLENGE PROJECT)

